

Apple Pro Training Series

Aperture 3

Organize, Perfect, and Showcase Your Photos

Dion Scoppettuolo

DVD-ROM with media and lesson files included



Level 1 Certification

Apple Pro Training Series: Aperture 3
Dion Scoppettuolo
Copyright © 2010 by Dion Scoppettuolo

Published by Peachpit Press. For information on Peachpit Press books, contact:

Peachpit Press
1249 Eighth Street
Berkeley, CA 94710
(510) 524-2178
<http://www.peachpit.com>
To report errors, please send a note to errata@peachpit.com
Peachpit Press is a division of Pearson Education

Apple Series Editor: Serena Herr
Project Editor: Nancy Peterson
Editor: Bob Lindstrom
Production Coordinator: Kim Wimpsett, Happenstance Type-O-Rama
Contributing Writer: Richard Harrington
Cameos Author: Liz Merfeld
Technical Editor: Ron Brinkmann
Technical Reviewer: Brendan Boykin
Copy Editor: Darren Meiss
Proofreaders: Darren Meiss, Elissa Rabellino
Compositor: Chris Gillespie, Happenstance Type-O-Rama
Indexer: Jack Lewis
Cover Illustration: Kent Oberheu
Cover Production: Chris Gillespie, Happenstance Type-O-Rama
Media Reviewer: Eric Geoffroy

Notice of Rights

All rights reserved. No part of this book may be reproduced or transmitted in any form by any means, electronic, mechanical, photocopying, recording, or otherwise, without the prior written permission of the publisher. For information on getting permission for reprints and excerpts, contact permissions@peachpit.com.

Photograph of Ron Brinkman courtesy Buckley Collum. All rights reserved. Williamson Valley Ranch footage and images courtesy Steve Martin. All rights reserved. Images of people of Northwest Africa, Dakar landscapes, and Iceland landscape by Don Holtz; Cathy and Ron's Wedding Photos by Catherine Hall Studios; Brinkmann photos by Ron Brinkmann; Tasmania photos by Stuart Harris; and Hawaii sunset photo by Ray Melcher are courtesy Apple, Inc. All rights reserved.

The projects and footage supplied with this book may only be used for educational purposes in association with the lessons included. Any other use, including but not limited to incorporating footage into another project, duplicating, or distributing footage, is expressly forbidden and requires explicit permission from the copyright holders listed above.

Notice of Liability

The information in this book is distributed on an "As Is" basis, without warranty. While every precaution has been taken in the preparation of the book, neither the authors nor Peachpit Press shall have any liability to any person or entity with respect to any loss or damage caused or alleged to be caused directly or indirectly by the instructions contained in this book or by the computer software and hardware products described in it.

Trademarks

Many of the designations used by manufacturers and sellers to distinguish their products are claimed as trademarks. Where those designations appear in this book, and Peachpit was aware of a trademark claim, the designations appear as requested by the owner of the trademark. All other product names and services identified throughout this book are used in editorial fashion only and for the benefit of such companies with no intention of infringement of the trademark. No such use, or the use of any trade name, is intended to convey endorsement or other affiliation with this book.

ISBN 13: 978-0-321-64744-3
ISBN 0-321-64744-0
9 8 7 6 5 4 3 2 1

Printed and bound in the United States of America

Contents at a Glance

| | |
|--|-----|
| Getting Started | xi |
| Creating and Organizing Your Photo Library | |
| Lesson 1 A Quick Tour of Aperture | 2 |
| Lesson 2 Adding and Managing Metadata | 42 |
| Lesson 3 Comparing and Evaluating Images | 102 |
| Lesson 4 Indexing Photos Using Faces and Places | 148 |
| Lesson 5 Managing Projects and the Library | 178 |
| Corrective and Creative Image Editing | |
| Lesson 6 Performing Nondestructive Editing | 206 |
| Lesson 7 Correcting Tone | 236 |
| Lesson 8 Correcting Color | 262 |
| Lesson 9 Making Local Adjustments with Brushes | 293 |
| Lesson 10 Working with RAW Images | 330 |
| Sharing Your Work | |
| Lesson 11 Creating Dynamic Slideshows | 356 |
| Lesson 12 Presenting Your Photos on the Web | 402 |
| Lesson 13 Delivering Final Images as Books, Prints, and Files | 426 |
| Appendix A Setting Up Your Work Environment | 461 |
| Appendix B Expanding Aperture Functionality | 467 |
| Glossary | DVD |
| Index | 471 |

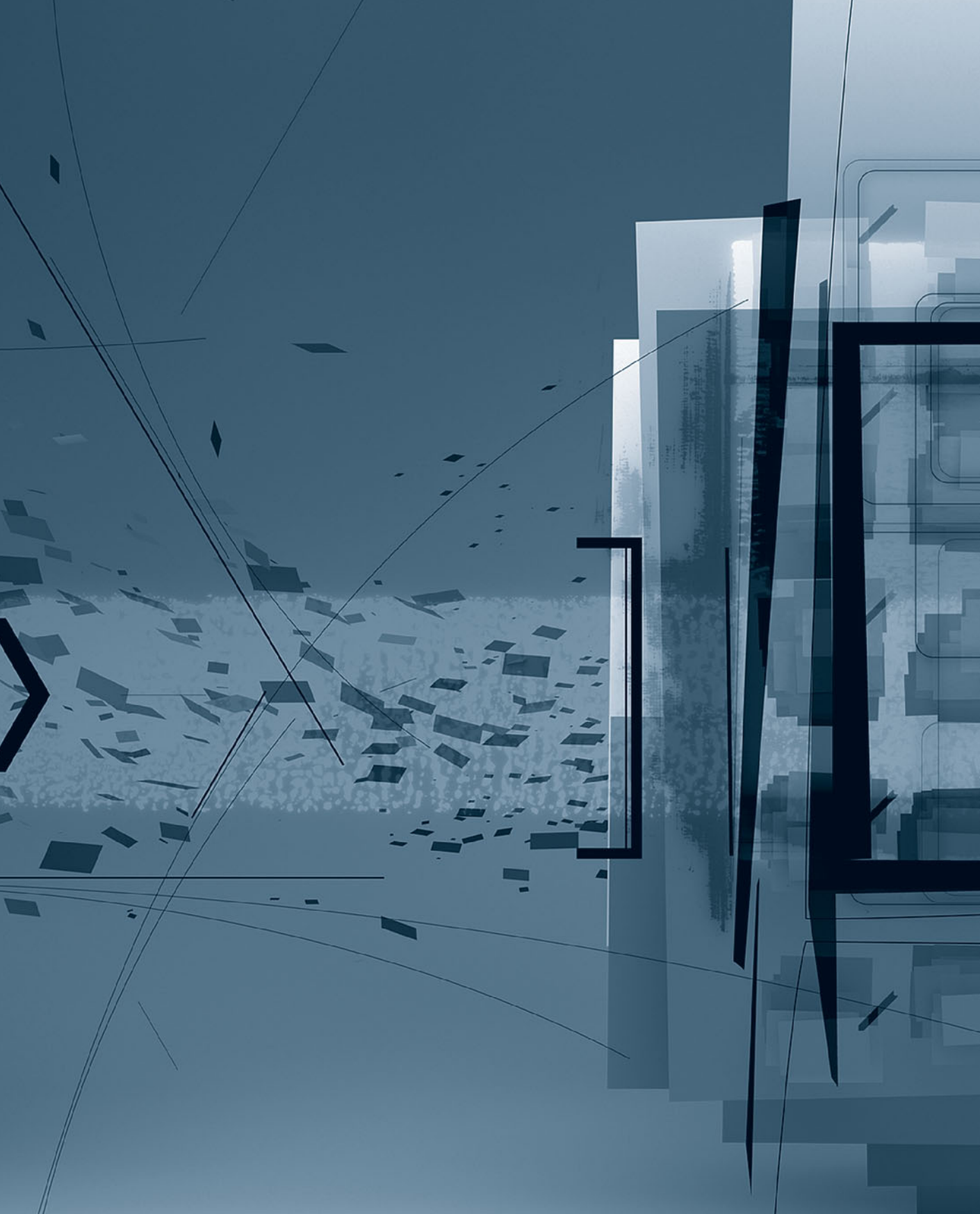


Table of Contents

| | |
|-----------------------|----|
| Getting Started | xi |
|-----------------------|----|

Creating and Organizing Your Photo Library

| | | |
|---------------------|--|--------|
| Lesson 1 | A Quick Tour of Aperture | 2 |
| | Opening Aperture | 4 |
| | Identifying Interface Elements..... | 7 |
| | Importing Images from a Memory Card | 9 |
| | Working with Images in the Browser | 13 |
| | Viewing and Using Metadata | 24 |
| | Adjusting Images..... | 27 |
| | Rating and Rejecting Images | 35 |
| | Sharing Your Photos with Email | 37 |
| | Posting to Facebook, Flickr, and MobileMe..... | 40 |
| | Lesson Review | 40 |
| Lesson 2 | Adding and Managing Metadata..... | 42 |
| | Importing files from the Finder | 44 |
| | Customizing Import Settings..... | 45 |
| | Displaying Metadata in the Browser and Viewer..... | 53 |
| | Using Keywords..... | 58 |
| | Editing Metadata Views and Presets | 80 |
| | Sorting and Filtering Your Project..... | 91 |
| | Lesson Review | 101 |

| | | |
|--|--|-----|
| Lesson 3 | Comparing and Evaluating Images | 102 |
| | Generating Aperture Previews | 104 |
| | Evaluating Images in Full-Screen Mode | 107 |
| | Using the Loupe Tool | 112 |
| | Assigning Image Ratings | 117 |
| | Comparing and Rating a Group of Images | 120 |
| | Using Primary Selection Options to Rate Images | 122 |
| | Working with Stacks | 123 |
| | Speed Rating Images Using Keystrokes | 137 |
| | Reviewing Collections on the Light Table | 139 |
| | Lesson Review | 146 |
| Lesson 4 | Indexing Photos Using Faces and Places | 148 |
| | Moving from iPhoto to Aperture | 150 |
| | Using Places to Put Pictures on a Map | 153 |
| | Creating a Smart Album from a Map | 167 |
| | Organizing a Library Using Faces | 169 |
| | Adding Facebook IDs to Faces | 175 |
| | Creating a Faces Smart Album | 176 |
| | Lesson Review | 177 |
| Lesson 5 | Managing Projects and the Library | 178 |
| | Importing Referenced Images | 180 |
| | Working with Referenced Images | 185 |
| | Organizing a Growing Library | 191 |
| | Backing Up Using a Vault | 199 |
| | Lesson Review | 201 |
| | Cameo: Catherine Hall | 202 |
| Corrective and Creative Image Editing | | |
| Lesson 6 | Performing Nondestructive Editing | 206 |
| | Working in the Adjustments Inspector | 208 |
| | Fixing Underexposed and Overexposed Images | 215 |
| | Cropping a Photo | 230 |
| | Using Lift & Stamp Tools | 233 |
| | Lesson Review | 235 |

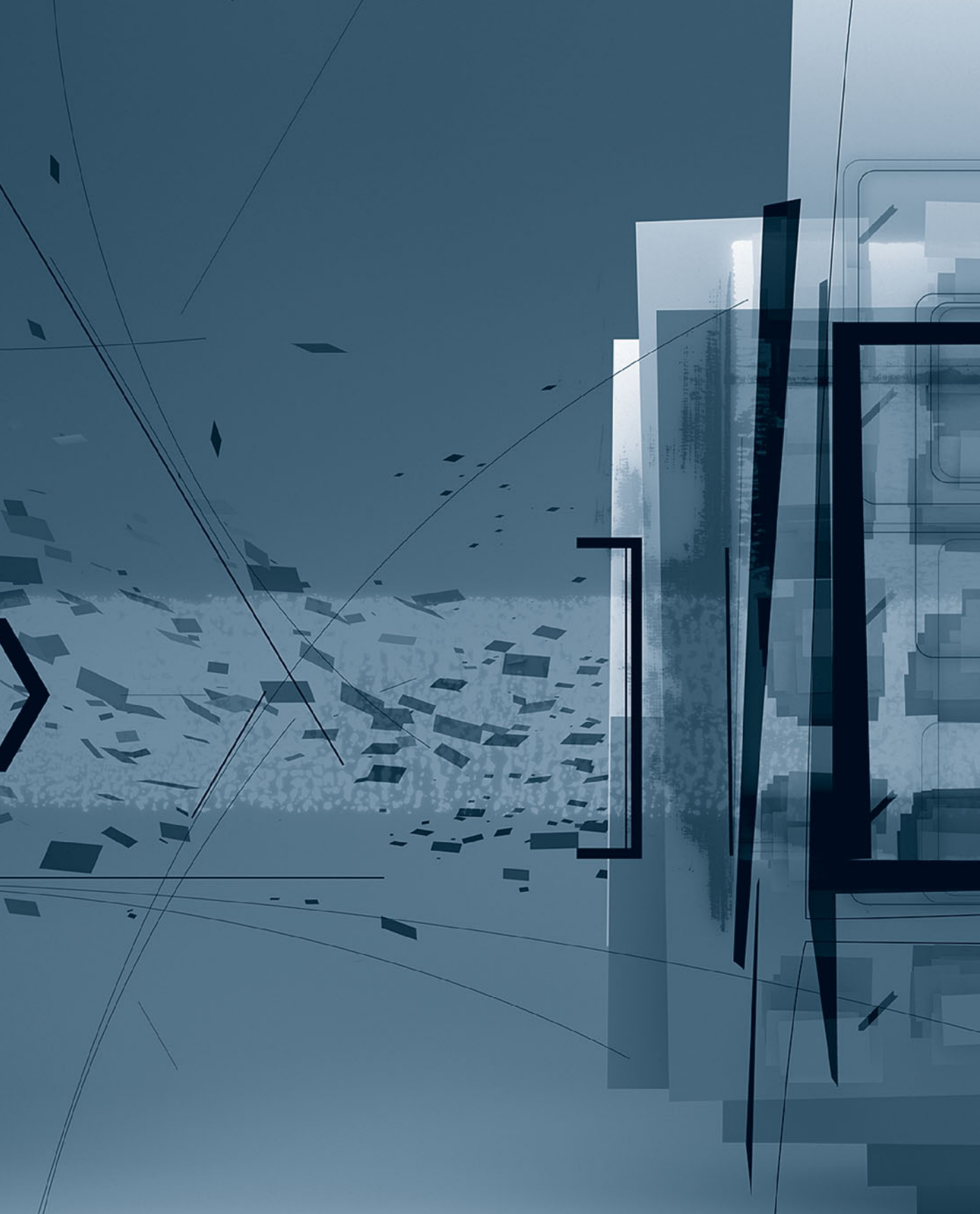
| | | |
|----------------------|--|---------|
| Lesson 7 | Correcting Tone | 236 |
| | Making Adjustments in Full Screen View | 238 |
| | Enhancing an Image | 239 |
| | Improving Highlights and Shadows | 244 |
| | Adjusting Image Levels | 249 |
| | Converting Color Images to Black and White | 256 |
| | Comparing Image Versions | 259 |
| | Lesson Review | 261 |
| Lesson 8 | Correcting Color | 262 |
| | Working with Color in the Enhance Controls | 264 |
| | Controlling Image Vibrancy | 268 |
| | Selectively Improving Color Using the Color Controls | 269 |
| | Working with Curves | 273 |
| | Correcting Chromatic Aberration | 283 |
| | Working with an External Editor | 285 |
| | Lesson Review | 290 |
| Lesson 9 | Making Local Adjustments with Brushes | 292 |
| | Using Brushes | 294 |
| | Adding and Erasing Brush Strokes | 294 |
| | Smoothing Skin | 296 |
| | Brightening Areas Using the Dodge Brush | 300 |
| | Darkening Areas Using the Burn Brush | 303 |
| | Applying a Brush to an Entire Image | 307 |
| | Correcting Halo Artifacts | 309 |
| | Retouching Images | 311 |
| | Cloning an Image | 319 |
| | Making a Brush from an Adjustment | 322 |
| | Creating Multiple Instances of a Brush | 325 |
| | Lesson Review | 328 |
| Lesson 10 | Working with RAW Images | 330 |
| | Working with RAW+JPEG Pairs | 332 |
| | Comparing RAW and JPEG Files | 334 |
| | Decoding a RAW File | 336 |

| | |
|---|-----|
| Adjusting Boost and Hue Boost | 339 |
| Using Sharpening and Noise Reduction..... | 340 |
| Removing Moire from RAW Images..... | 349 |
| Saving RAW Fine-Tuning Presets | 351 |
| Working with DNG Files | 351 |
| Lesson Review | 352 |
| Cameo: Don Holtz | 353 |

Sharing Your Work

| | | |
|------------------|--|-----|
| Lesson 11 | Creating Dynamic Slideshows | 356 |
| | Using Slideshow Presets and Albums | 358 |
| | Using Slideshow Presets | 358 |
| | Creating a Slideshow Album | 362 |
| | Enhancing Slideshows | 367 |
| | Using Titles, Transitions, and Photo Effects..... | 375 |
| | Mixing Music and Sound Effects | 382 |
| | Working with Video | 390 |
| | Editing to the Beat | 392 |
| | Editing on the Fly | 394 |
| | Sharing Your Slideshow | 395 |
| | Lesson Review | 400 |
| Lesson 12 | Presenting Your Photos on the Web | 402 |
| | Posting to Facebook, Flickr, and MobileMe..... | 404 |
| | Creating a Web Journal | 413 |
| | Adding Images to a Web Journal..... | 415 |
| | Changing and Modifying Web Journal Themes | 417 |
| | Publishing a Web Journal..... | 424 |
| | Lesson Review | 425 |
| Lesson 13 | Delivering Final Images as Books, Prints, and Files | 426 |
| | Creating a Book Layout | 428 |
| | Customizing Pictures and Page Layouts..... | 437 |
| | Ordering Books..... | 446 |

| | | |
|-------------------|---|------------|
| | Delivering Printed Images | 447 |
| | Printing with Presets. | 450 |
| | Delivering Digital Images. | 454 |
| | Lesson Review | 457 |
| | Cameo: Ron Brinkmann | 458 |
| Appendix A | Setting Up Your Work Environment | 461 |
| | Adjusting Your System Preferences | 462 |
| | Calibrating Your Display | 462 |
| | Using Multiple Displays on a Mac | 463 |
| | Using Tethered Shooting | 465 |
| Appendix B | Expanding Aperture Functionality | 467 |
| | Glossary | DVD |
| | Index. | 471 |



Getting Started

Welcome to the official Apple Pro Training course for Aperture, the powerful photo editing and management software from Apple. This book includes a variety of real-world photography projects, which are used as clear examples of the way Aperture works, from import and organization to image editing and output.

Whether you're a professional photographer, someone who uses photographs in your work, or someone who is passionate about photography, this book will guide you through the Aperture nondestructive workflow from beginning to end.

The Methodology

This book takes a hands-on approach to learning Aperture. The lessons are designed to show you a real-world workflow of importing, organizing, rating, editing, exporting, printing, publishing, and archiving your images, and performing all the other tasks required after a photo shoot. The projects represent a cross-section of specialty photography genres and types of shoots. Whether or not your type of photography is specifically featured, you'll find that the techniques taught here can be applied.

Aperture has an extensive list of keyboard shortcuts and a variety of ways to navigate through its interface and menus. We focus on the most common keyboard shortcuts you can use to increase your efficiency, and on the interface views and navigation schemes that are most effective for a typical workflow. The Aperture Help menu includes a comprehensive list of keyboard shortcuts if you want to learn more.

Course Structure

This book is designed to teach you to use Aperture using 13 project-based, step-by-step lessons and accompanying media files. It is divided into three sections, as follows:

Creating and Organizing Your Photo Library

Lessons 1–5 focus on creating and organizing your Aperture library. After a quick tour of Aperture, you'll explore how to import from various sources; sort, compare, and rate images quickly and efficiently; apply keywords and metadata; search your library efficiently; utilize GPS location data; index photos based on face detection and recognition; organize images into folders and projects; and archive images in ways that are easy, secure, and intuitive.

Corrective and Creative Image Editing

Lessons 6–10 start out with the basics of image editing and move on to more advanced image-processing features of Aperture. You'll learn to make basic adjustments—such as exposure, white balance, and cropping—and then move on to tonal correction, color correction, and local adjustments such as retouching, cloning, dodge, and burn. Finally, you'll explore the Aperture capabilities specific to using RAW files.

Sharing Your Work

Lessons 11–13 focus on the final stage of any project: creating the final product. You'll learn to share your images for client review in a variety of formats from prints and

custom photo books to compelling web journals and dynamic slide shows that mix photos, video, and audio.

Finally, Appendix A tackles some advanced topics, such as automating and scripting workflows, tethered shooting, and multi-monitor configurations. Appendix B explores ways you can integrate third-party plug-ins for image adjustment and sharing.

System Requirements

A minimum hardware and software configuration is required to take advantage of the accelerated performance capabilities of Aperture.

Minimum requirements:

- ▶ An Intel-based Macintosh computer
- ▶ Mac OS X 10.5.8 or 10.6.2 or later
- ▶ Aperture 3 with the latest software updates applied

Recommended system requirements are constantly evolving as new hardware and software becomes available. To check for the latest requirements, go to www.apple.com/aperture/specs.

Before beginning to use *Apple Pro Training Series: Aperture 3*, you should have a working knowledge of your Mac and its operating system. Make sure that you know how to use the mouse and standard menus and commands, and also how to open, save, and close files. If you need to review these techniques, see the documentation included with your Mac.

Copying the Aperture Lesson Files

To follow along with all the lessons, you'll need to copy the lesson files and libraries onto your hard disk. The lesson files and libraries are located on the DVD accompanying this book. You'll need approximately 4 GB of free space on your hard disk.

- 1 Insert the *APTS Aperture3* DVD into your computer's DVD drive.

The Finder window will open, displaying the contents of the DVD. If the window doesn't appear, double-click the *APTS Aperture3* DVD icon to open it.

- 2 Drag the APTS Aperture book files folder into the Documents folder on your hard disk.

NOTE ► The location of this folder is important. The Aperture and iPhoto libraries for this book are located in this folder. You'll also be importing photos and referring to this folder throughout the book.

- 3** Once the “APTS Aperture book files” folder is copied to your Documents, double-click the folder to show its contents.
- 4** To ensure you are using the correct Aperture library when you open Aperture, double-click the APTS Aperture3 library from within the “APTS Aperture book files” folder.
- 5** After Aperture opens, it will automatically set this library as the default, and you can then quit Aperture. Whenever you open Aperture in the future, it will use this APTS Aperture3 library.
- 6** To ensure that you are using the correct iPhoto library when you browse it within Aperture, double-click the APTS iPhoto library in the “APTS Aperture book files” folder.
- 7** After iPhoto opens, it will automatically set this library as the default, and you can then quit iPhoto. Whenever you browse the iPhoto library from within Aperture in the future, it will use this APTS iPhoto library.
- 8** Eject the DVD.

NOTE ► When you complete the lessons in this book, you can return to your personal iPhoto and Aperture libraries by double-clicking the libraries located in the Mac OS X Pictures folder, which is your personal libraries' default location.

About the Apple Pro Training Series

Apple Pro Training Series: Aperture 3 is both a self-paced learning tool and the official curriculum of the Apple Pro Training and Certification Program.

Developed by experts in the field and certified by Apple, the series is used by Apple Authorized Training Centers worldwide and offers complete training in all Apple Pro products. The lessons are designed to let you learn at your own pace. Each lesson concludes with review questions and answers summarizing what you've learned, which can be used to help you prepare for the Apple Pro Certification Exam.

For a complete list of Apple Pro Training Series books, see the ad at the back of this book, or visit www.peachpit.com/apts.

Apple Pro Certification Program

The Apple Pro Training and Certification Programs are designed to keep you at the forefront of Apple's digital media technology while giving you a competitive edge in today's ever-changing job market. Whether you're an editor, graphic designer, sound designer, special effects artist, or teacher, these training tools are meant to help you expand your skills.

Upon completing the course material in this book, you can become an Apple Certified Pro by taking the certification exam online or at an Apple Authorized Training Center. Certification is offered in Final Cut Pro, Final Cut Server, Color, Compressor, Motion, Soundtrack Pro, DVD Studio Pro, and Logic Pro. Certification as an Apple Pro gives you official recognition of your knowledge of Apple's professional applications while allowing you to market yourself to employers and clients as a skilled, pro-level user of Apple products.

For those who prefer to learn in an instructor-led setting, Apple offers training courses at Apple Authorized Training Centers worldwide. These courses, which use the Apple Pro Training Series books as their curriculum, are taught by Apple Certified Trainers and balance concepts and lectures with hands-on labs and exercises. Apple Authorized Training Centers have been carefully selected and have met Apple's highest standards in all areas, including facilities, instructors, course delivery, and infrastructure. The goal of the program is to offer Apple customers, from beginners to the most seasoned professionals, the highest-quality training experience.

For more information, please see the ad at the back of this book, or to find an Authorized Training Center near you, go to training.apple.com.

Companion Web Page

As Aperture 3 is updated, Peachpit may choose to update lessons or post additional exercises on this book's companion web page, as necessary. Please check www.peachpit.com/apts.aperture3 for revised lessons or additional information.

Resources

Apple Pro Training Series: Aperture 3 is not intended as a comprehensive reference manual, nor does it replace the documentation that comes with the application. For comprehensive information about program features, refer to these resources:

- ▶ The Reference Guide. Accessed through the Aperture Help menu, the Reference Guide contains a complete description of all features.
- ▶ Apple website: www.apple.com.

4

Lesson Files

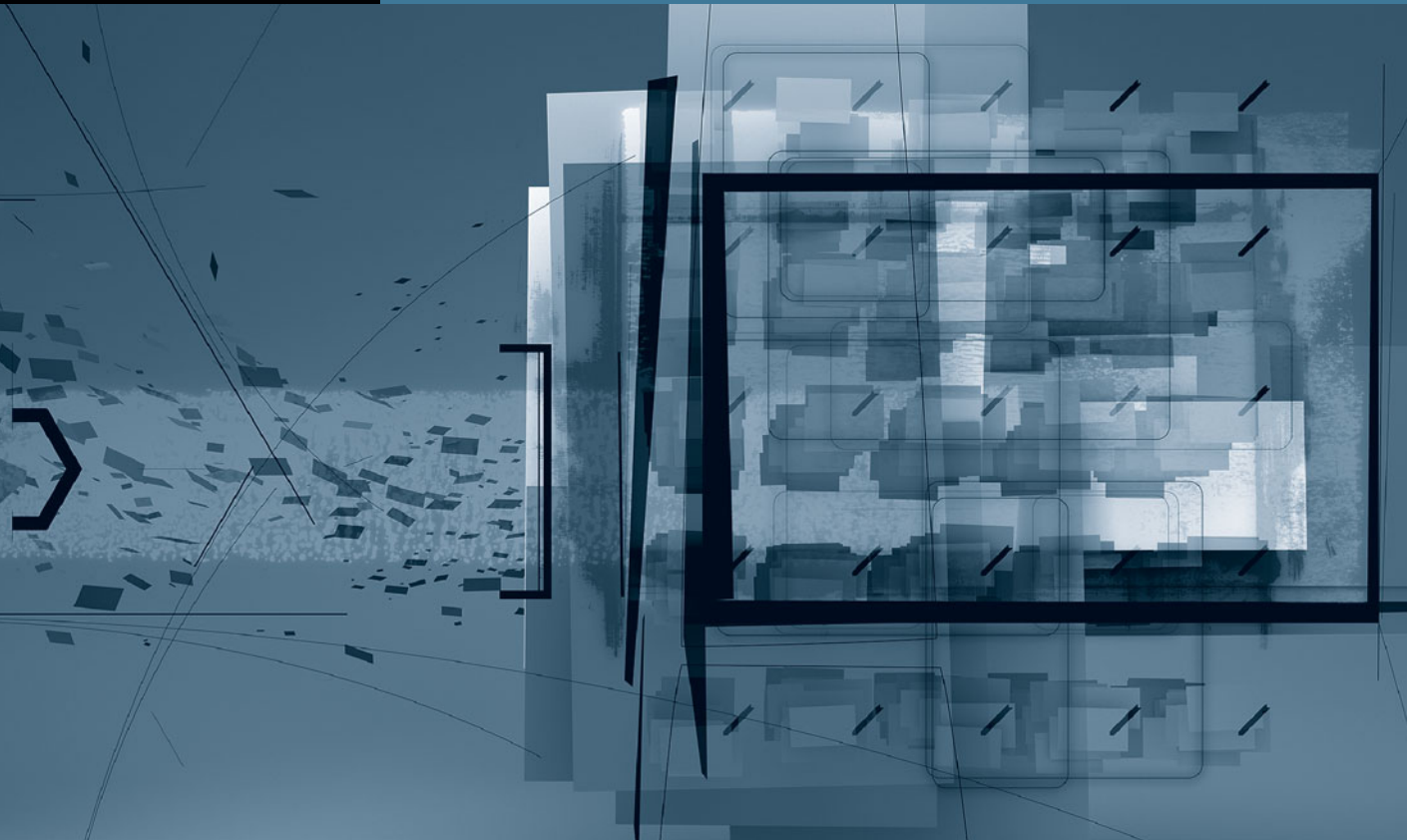
APTS Aperture book files > APTS iPhoto Library
APTS Aperture book files > Lessons > Lesson04

Time

This lesson takes approximately 60 minutes to complete.

Goals

Import photos from the iPhoto Browser
View a photo's location on a map
Assign a location to a photo and project
Import a GPS track log
Name detected faces in a project
Assign missing faces
Create Smart Albums of specific people



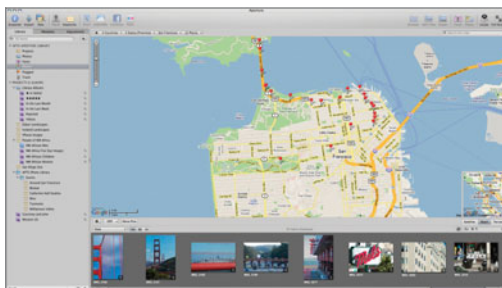
Lesson 4

Indexing Photos Using Faces and Places

In Lesson 3, you learned that metadata can come from the camera, or it can be entered manually in the form of keywords, captions, ratings, and so on. Those types of metadata are great for identifying when and how the photo was taken. But how can you precisely determine where a photo was taken or who is in the photo? You could take scrupulous notes while shooting...yeah, me neither. Thankfully, there are easy and engaging ways in which Aperture can help you.

In this lesson, you'll examine two features that first appeared in iPhoto but have grown considerably more sophisticated in Aperture 3: Faces and Places provide a very natural way to index photos. Faces is a feature that not only *detects* faces of people in your photos, but with some minor assistance from you it can also recognize those people. The second feature, Places, uses GPS data to identify where photos were taken.

Because this lesson covers iPhoto features that have migrated to Aperture, we'll also explore migrating your iPhoto library to Aperture.



Moving from iPhoto to Aperture

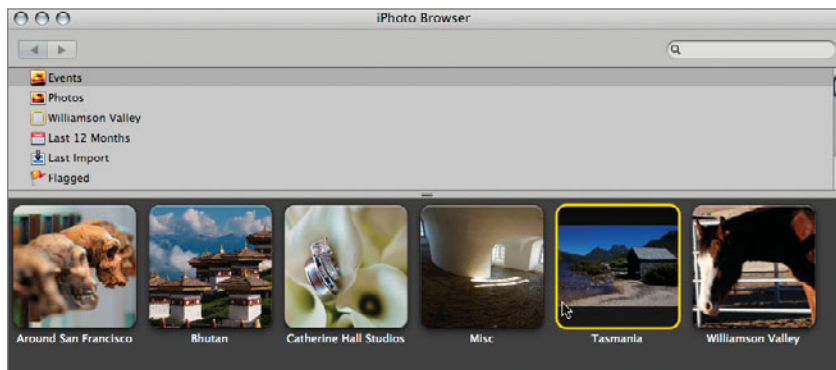
For many iPhoto users, switching to Aperture is a natural progression. Aperture includes almost all the fun and elegant features of iPhoto while adding more comprehensive image management, editing, and output capabilities. You can make the move from iPhoto to Aperture in one of two ways: You can move your entire library at once, or you can selectively move Events, albums, or individual photos.

Browsing an iPhoto Library

Aperture includes an iPhoto Browser to preview and import images, albums, or Events. The iPhoto Browser is a handy way to look at your iPhoto images without importing the entire library.

To open the iPhoto Browser:

- 1 Choose File > Import > Show iPhoto Browser, or press Option-I.
- 2 Double-click the Tasmania iPhoto Event to see the contents of the Event.



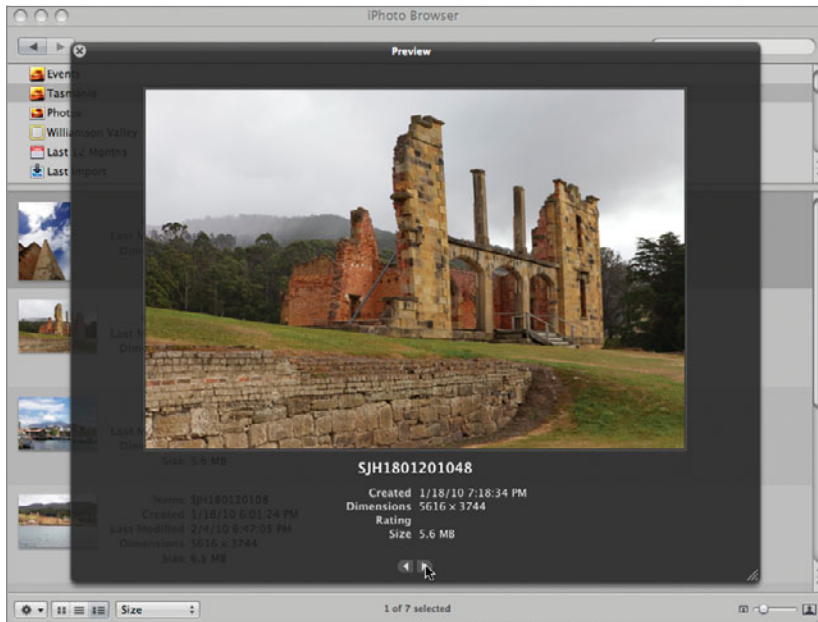
TIP As in Aperture, in the iPhoto Browser, you can slowly position the mouse pointer over an Event to quickly preview its contents. You can view larger image previews by dragging the slider at the bottom of the Browser window.

The iPhoto Browser lets you view your photos and events as a grid. When you click an Event, you can also display the images in a list or detailed view.

- 3 Click the View List button, and then click the View Details button.



- 4 From the Sort pop-up menu, choose Size.
- 5 In the Details view, double-click the first image to see a larger preview of the image.
- 6 Click the Next Photo button.



- 7 Close the Preview window.
- 8 Close the iPhoto Browser.

Whether you're importing an entire Event or just a single image, you can select the image or Event and drag it into the Aperture library, which creates a new project. Dropping an item onto an existing Aperture project imports the item to that project.

In the next exercise, however, you want to import all the images from your iPhoto library, so let's look at an alternative way to do that.

NOTE ► If you Command-Option-drag images from the iPhoto Browser, Aperture will import them as referenced images. You'll learn more about referenced images in Lesson 5.

Migrating an Entire iPhoto Library

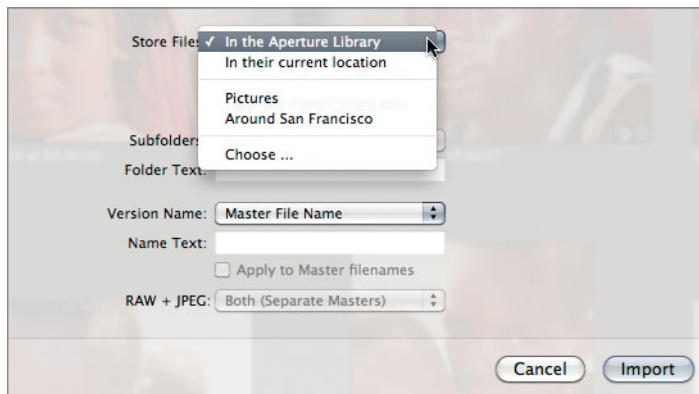
Because Aperture and iPhoto are both Apple applications, they are designed to share information. For example, albums that you organized in iPhoto will seamlessly become Aperture albums with the same structure. The EXIF data, keywords, ratings, flags, and any applied adjustments will be maintained.

To import an entire iPhoto library:

- 1 Choose File > Import > iPhoto Library.

Aperture automatically navigates to the location of your current iPhoto library on your hard disk. In the Import window, some of the same Import Browser settings are available, such as the master file name and where to store files. The least complicated way to import an iPhoto library is to store the photos in the Aperture library.

- 2 In the file browser, select the APTS iPhoto Library.
- 3 From the Store Files pop-up menu, choose “In the Aperture Library.”



NOTE ► If you choose “In their current location,” your images are imported as referenced images, which will leave the files in iPhoto and link them to Aperture. Because the files are linked and not copied, using referenced images can save disk space, but managing iPhoto-referenced images in Aperture can become confusing unless you are very organized. You’ll learn more about referenced images in Lesson 5.

- 4 Click Import to add the images to your Aperture library.

- 5 After the import process is complete, click OK on the dialog that confirms the number of images you have imported.

NOTE ► By default, importing images from your iPhoto library into your Aperture library copies the files. You end up with two master images: one in your Aperture library and one in your iPhoto library. This can double the amount of disk space each copied image uses on your Mac. After importing your iPhoto images, you can choose to delete your images from iPhoto.

Using Places to Put Pictures on a Map

You can now buy cameras with built-in or optional GPS capabilities. GPS-equipped cameras will record where you shot each picture, just as transparently as they capture EXIF metadata. If you own an iPhone 3G or 3GS, you already have a GPS-equipped camera. The built-in iPhone GPS hardware tags each photograph with location data.

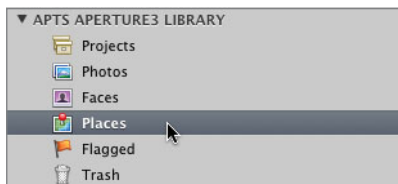
The Aperture Places feature uses that GPS data to help you organize, filter, and find your images.

NOTE ► To use Places, you must be connected to the Internet. The Places maps and parts of the location database are not stored on your hard disk because they are updated regularly.

Viewing GPS-Tagged Images in Places

With Places, you can view all your GPS-tagged images on a map, or only those from a selected project. Let's start by viewing all the GPS-tagged images for all your projects.

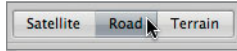
- 1 In the Library inspector, select Places.



The viewer is replaced by a map view with a filmstrip view. You see only the images in the library that are currently tagged with location data. The red pins on the map

indicate where photos were taken. You can change the style of your map to show a satellite, road, or default terrain view.

- 2 Click the Road map view button to change the Places map to a different style.

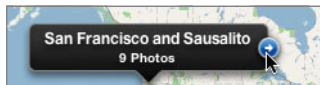


- 3 Place the mouse pointer over the red pin on the west coast of the U.S.



NOTE ► Multiple photos taken in one general area may appear as a single pin until you zoom into the map.

- 4 Click the arrow to the right of the pin's location label.



The map scales to view only those images associated with the selected pin.

TIP ► When using a Magic Mouse or a Multi-Touch track pad, you can zoom into the map by swiping two-fingers up or down. You can pan the map by dragging your finger.

The filmstrip view applies the Filter HUD to filter out images that are not located in the San Francisco Bay area. You'll need to clear that filter before you can view other images.

- 5 Clear the filmstrip view's search field by clicking the Reset button (the X to the right).

You can use the Path Navigator pop-up menus at the top of the Places view to quickly jump between locations. Let's view the pictures that were taken in Tasmania.

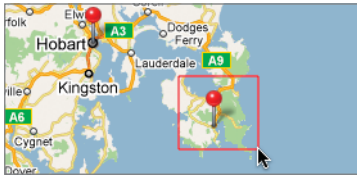
- 6 From the Path Navigator pop-up menus, choose States/Provinces > Tasmania.



Another way to zoom into the map is to draw a selection rectangle around an area.

TIP You can also zoom and pan using the map's Overview Map pane.

- 7 Hold down the Command key and draw a selection rectangle around the pin to the southeast of Hobart, Tasmania. The map zooms into the area defined by the selection rectangle.



- 8 In the lower right of the map, click the bottom Tasman pin. The pin turns yellow. The two photos taken in that area are highlighted in the filmstrip view.
- 9 Click the arrow on the right of the Tasman pin's location label to zoom in.
- 10 Click the first image in the filmstrip view, **SJH180120108**.



The pin's location label appears, showing which pin represents the selected image. If you are interested only in location metadata in a selected project, you can use the Places button in the toolbar.

- 11 In the Library inspector, select the iPhone Images project.
- 12 In the toolbar, click the Places button to view the Places map for this project.



Clicking the Places button in the Library inspector shows all the locations for every project. Clicking the Places button in the toolbar shows only the locations in the selected project. The functionality is the same regardless of which view you are using.

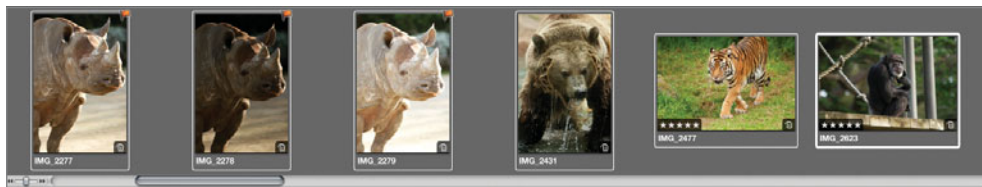
Assigning Locations

Even without a GPS-equipped camera or iPhone, you can use Places to assign a location to a photo by dragging photos to the map.

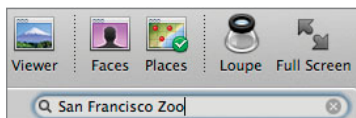
- 1 In the Library inspector, select the Around San Francisco project.



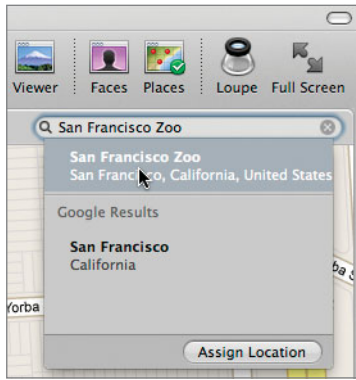
- 2 Select the first rhino image, **IMG_2277**.
- 3 Shift-click the chimpanzee image to the right, **IMG_2623**, to select six images.



- 4 In the Places search field, type *San Francisco Zoo*. The San Francisco Zoo appears in the list.



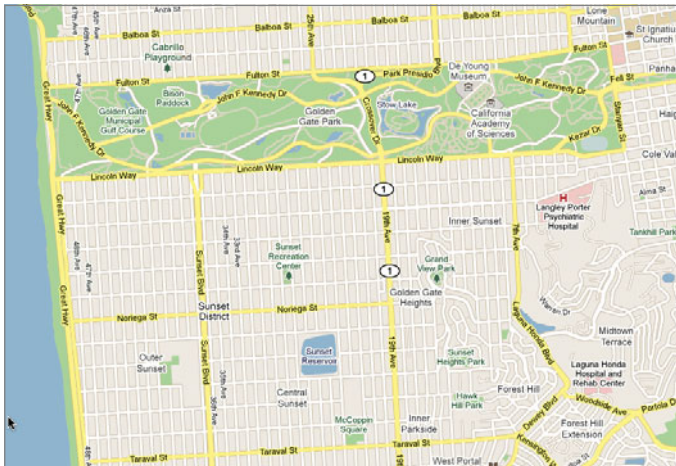
- 5 In the list, choose San Francisco Zoo.



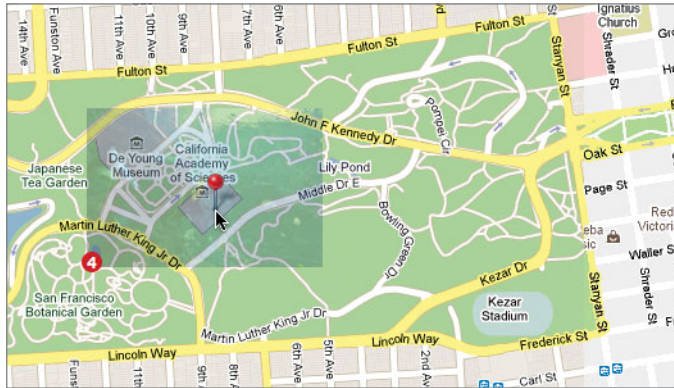
- 6 Click Assign Location. The selected images are now assigned to the San Francisco Zoo. Each image that you selected in the filmstrip view now has a red pin attached to it.

You can also drop images onto the map and Aperture will attempt to find a local place of interest.

- 7 In the filmstrip view, select the first four images, starting with the skulls and ending with the butterfly. These images were taken at the California Academy of Sciences in Golden Gate Park.
- 8 On the Zoom slider, click the Zoom out button (minus sign) four times, or until you can see Golden Gate Park at the top of the map.



- 9 Hold down the Command key and draw a selection rectangle around the right half of the park to zoom into that area on the map.
- 10 In the map, locate the California Academy of Sciences, and then drag the four selected images onto the gray rectangle that marks the academy.



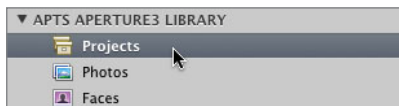
- 11 In the dialog that appears, click Done.

Aperture assigns those images to that map location, and also identifies the location as the California Academy of Sciences.

Assigning a Location to a Project

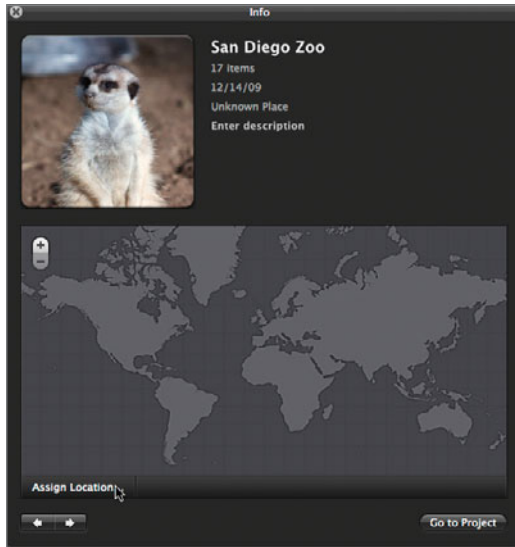
Although it's handy to assign individual photos to specific locations, when you have a large library of images without GPS metadata, you probably don't have the time to assign a location to each photo. A quick way to benefit from Places is to assign an entire project to a location.

- 1 In the Library inspector, select Projects.



- 2 Place your mouse pointer over the San Diego Zoo project and click the Info button to view the Info dialog.

- 3 Click Assign Location to open the location dialog.

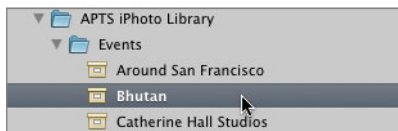


- 4 In the search field, type *San Diego Zoo*.
- 5 In the list that appears, choose San Diego Zoo.
- 6 Click Assign to link all the images in the project to the San Diego Zoo location.
- 7 Close the Info dialog.

Adding an Unknown Location to the Places Database

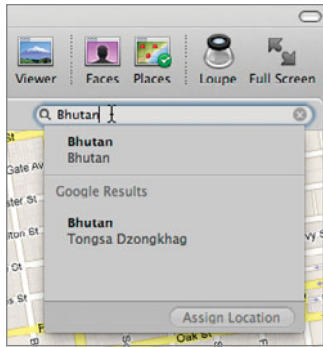
When Aperture can identify your photo location, using Places is very easy; but what happens when the Aperture location database doesn't know your location? Let's find out.

- 1 In the Library inspector, select the Bhutan project, and then in the Browser, select the first image.



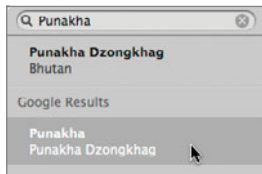
- 2 Press Command-A to select all the images.

- 3 In the toolbar, click the Places button.
- 4 Triple-click in the Places search field to select all the current text, and type *Bhutan*.



Not surprisingly, the list of places isn't long, so you'll need to add your own. When Aperture doesn't have location information in its database, it does what we all do: it uses a search engine. You can find obscure locations and even addresses by using Assign Location.

- 5 Choose Metadata > Assign Location. This should look a little familiar. It's the same Location window you saw when you clicked the Assign Location button on the project Info dialog.
- 6 In the search field, type *Punakha*, which is the town in Bhutan where these photos were taken.
- 7 Select Punakha in the Google Results.

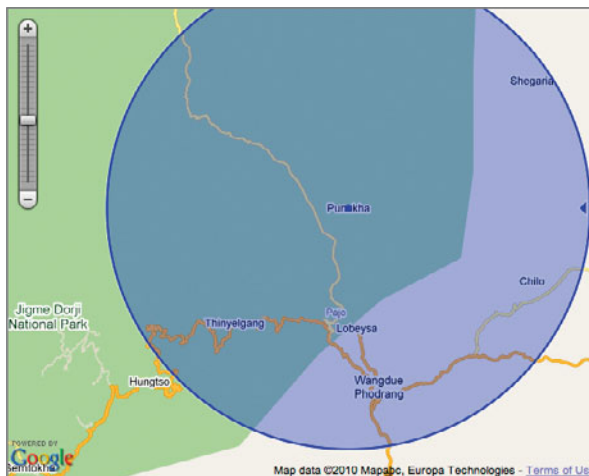


By selecting any location under the Google results, you can edit the location pin placement and the broader area associated with the location. A blue circle appears on the map that roughly identifies the area of the Punakha Dzongkhag (Fortress). Although this location is roughly where these photos were taken, the images were actually shot over a much wider area than just the fortress. Rather than be too specific, let's modify this pin to associate it with a more general area.

- 8 Click the Zoom slider's Zoom out button a few times until the town of Wangdue Phodrang appears at the bottom of the map.



- 9 Click the blue arrows at the right side of the circle, and drag to the right until you reach the edge of the map.



The blue circle represents the area that you will mark as the district of Punakha. Because locations can't always be represented as a single dot, Aperture allows you to assign a wider area to a given location.

TIP You can drag within the blue circle to reposition the area.

The last thing you'll do is name this area more generally, as the town of Punakha is not only the Punakha Fortress.

- 10 At the bottom of the Assign Location dialog, in the Place Name field, type *Punakha District* and then press Tab.



TIP You can remove any location you added to the database by choosing Metadata > Manage My Places.

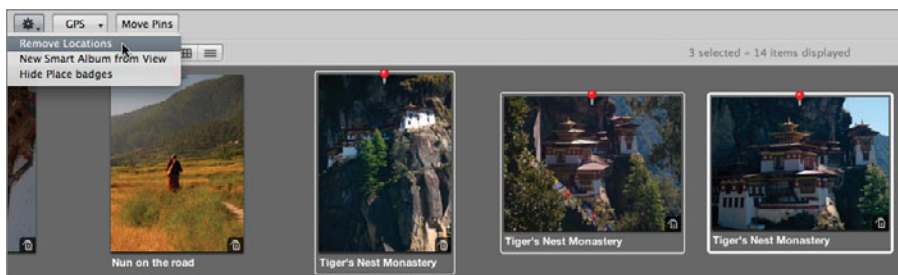
- 11 Click Assign.

Your nine photos are now assigned to a wider area in the town of Punakha, Bhutan.

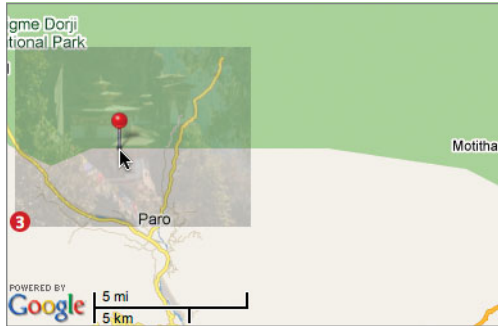
Removing a Photo from a Location

You've been doing well, but you just hit a small bump. You discover that The Tiger's Nest Monastery is in Paro Bhutan, not Punakha. How did you miss that one? You'll want to move those three photos from Punakha to the correct location of Paro.

- 1 Press Command-Shift-A to deselect all the images in the Browser.
- 2 In the Browser, select the three Tiger's Nest images.
- 3 From the Action pop-up menu, choose Remove Locations to remove the red location badges from the Tiger's Nest thumbnails in the Browser.



- 4 On the Zoom slider, click the Zoom out button a few times, and drag the map to the right until you see the town of Paro on the left side of the map.
- 5 Drag the three Tiger's Nest images onto the green area above Paro. Click Done.



The pin and photos are assigned to *Paro District*. Aperture knows that this location is within the district of Paro, but that's as much as it knows. Fortunately, it's easy to get more specific.

- 6 Control-click (or right-click) the pin, and from the shortcut menu, choose New Place for Photos.



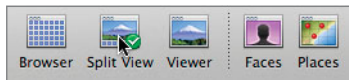
- 7 In the Place Name field, type *Tiger's Nest*, press Tab, and click Done.

You've successfully moved the 300-year-old monastery 90 miles to its correct location. Well, at least you've moved the three photos of the 300-year-old monastery to their correct locations and added the location's name.

Assigning a Location in the Metadata Inspector

You don't always need to view such a large map when assigning an image location. You can do it within the Metadata inspector. It's not as swanky in appearance, but it gets the job done efficiently.

- 1 Click the Split View button, or press V until you can see the Viewer and the film-strip view.



- 2 Select the Around San Francisco project.
- 3 In the filmstrip view, select the last image, **IMG_3332**. This photo of the famous painted ladies of San Francisco should be assigned to Alamo Square.
- 4 In the Inspector pane, click the Metadata tab.
- 5 In the Metadata inspector, click the Map Pane button. There's no location metadata assigned to this photo, so let's add it.



- 6 In the Location field, type *Alamo Square*.
- 7 In the list that appears, select Alamo Square.
- 8 Click the Assign Location button (checkmark) to confirm the location.

The photo now has the location marked as Alamo Square in San Francisco, but it's not as precise as you might like it. In the next exercise, you'll move it.

Moving a Pin

When Aperture assigns a location for images without GPS data, it places the pin in the center of that location. Having taken the picture, you probably have a more exact knowledge of where you were. You can move a pin to match exactly where a photo was taken with just a few simple steps.

- 1 In the toolbar, click the Places button.

Aperture places this photo in the center of Alamo Square. The picture was actually taken at the southeast corner of the park near Steiner and Hayes Streets, so you'll move the pin.

- 2 On the map, click the Alamo Square pin.
- 3 On the Zoom slider, click the Zoom in button (plus sign) three or four times.
- 4 In the lower left of the Maps dialog, click the Move Pins button.



The pin turns purple, and a dialog appears.

- 5 Drag the pin to the lower-right corner of Alamo Square.



- 6 In the dialog, click Done to confirm its new location.

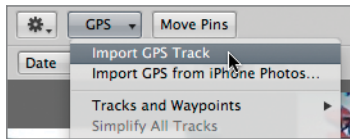
Being able to move a pin to the precise location where the photo was taken makes Places just as valuable for the photos in your library that lack GPS data, which is probably most of them.

Importing GPS Track Files

You aren't limited to assigning locations manually or taking pictures only with your iPhone. You can get location data for your images in other ways, such as using a small handheld GPS receiver that can continuously capture location data and save it as a track log in GPX format. If you don't want to carry a separate GPS device, certain iPhone apps do the same thing. Path Tracker is one such app that can record and save your iPhone location data as a GPS track log that you can add to Aperture.

NOTE ► Track log files include GPS receiver data. Aperture imports two track log formats: NMEA and GPX.

- 1 In the Library inspector, select the Around San Francisco project.
- 2 In the toolbar, click the Places button.
- 3 From the GPS pop-up menu below the map, choose Import GPS Track.



TIP ► You could also apply location information from iPhone photos to photos in your Aperture library by choosing GPS > Import GPS from iPhone Photos.

- 4 Navigate to APTS Aperture book files > Lessons > Lesson04.
- 5 Select San Francisco GPS Track.gpx, and click the Choose Track File button to import the track log.

With the track log imported, you can see the path that was taken during the time the photographs were shot. The track log includes timestamps that are recorded every few seconds. Because your photos have times associated with them, Aperture can match times and locations for perfect placement of each photo.

TIP ► Make sure your camera's date/time is correctly set. The GPS device will always get the proper time from the GPS signal but your camera requires your assistance.

Since many of your photos in the Browser already have locations assigned, it would be easier if you could just view the images without location data.

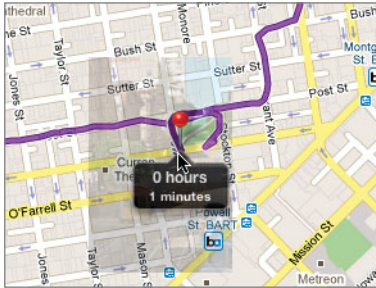
- 6 In the tool strip, click the Show Unplaced Images button.



- 7 In the Browser, select the first image of the cable car, **IMG_2660**.

- 8 Drag the image onto the starting point of the track log. You can find the starting point by dragging the image over the track path and dropping when the label says 0 hrs.

The label indicates the time of the track log at the mouse pointer location: 0 hrs means that you are 0 hrs into this track (the starting point). Because this is the first image, it makes sense to position it at the start of your track.



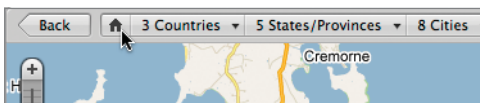
- 9 From the dialog that appears, choose Assign Locations. Each photo is placed along the track according to the time it was taken.

TIP Typically, GPS logs are created using UTC (Coordinated Universal Time, or to those of us less technical, GMT, Greenwich Mean Time). Aperture automatically assumes that track logs are UTC based and shifts the track log times based on your Mac clock settings. If your GPS device is not based on UTC time, this can cause an offset. If the track log's timestamp is offset, you can change the time zone in the GPS menu just as you modified the time zone of the Africa images in Lesson 2.

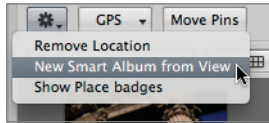
Creating a Smart Album from a Map

Now that you have tagged all your photos with location information, you can create geography-based Smart Albums.

- 1 From the Library inspector, select the Places view.
- 2 From the Path Navigator pop-up menus, click the Home button to see the entire world map.



- 3 Command-drag a selection rectangle around the pins located in the western United States. This scales the map to show only that area.
- 4 From the Action pop-up menu at the bottom of the map, choose New Smart Album from View.



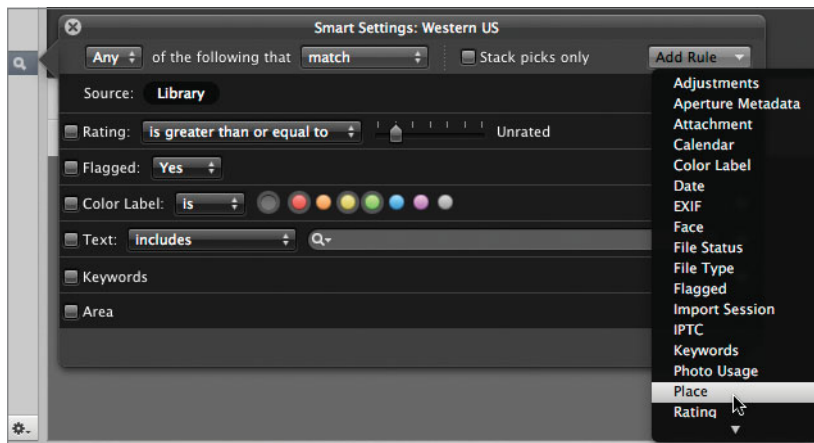
- 5 In the Library inspector, type *Western US* as the name of the new Smart Album.
- 6 In the toolbar, click the Places button to see a map of all the locations for images taken in the Western U.S.

In the future, if you add any images to your library that fall within the region defined for that Smart Album, they automatically will be added to that Smart Album. If you want to narrow your Smart Album to a specific state or city, you can use the Smart Album's Smart Settings HUD.

- 7 Click the Smart Album's Smart Settings HUD.

The Area checkbox sets your criteria to include images that fall within the area viewed in the map.

- 8 Deselect the Area checkbox.
- 9 From the Add Rule pop-up menu, choose Place, and select the Place checkbox.



- 10 In the Place field, type *California* to narrow the geographical area for this Smart Album.
- 11 Close the Smart Album's Smart Settings HUD.

Organizing a Library Using Faces

Now that you know where your images were taken, you'd also like to know who is in them. Faces is an Aperture feature that not only detects human faces in images (not dogs or cats), but it can also recognize the same face throughout your library.

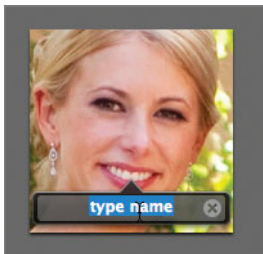
Using Faces View

Like Places, Faces can be applied to an entire library or only a single project. You can choose which by using the Faces view in the Library inspector, or as in this exercise, clicking the Faces button in the toolbar.

- 1 In the Library inspector, select the Catherine Hall Studios project.
- 2 In the toolbar, click the Faces button.

Aperture opens the Faces view, which is initially displayed as an empty corkboard with a special filmstrip view at the bottom of the window. The thumbnails are zoomed into each face that Aperture detects in the project images. The next step is to assign names to those faces, which will add them to the corkboard area. Let's focus on finding all the photos of the bride and groom in this wedding.

- 3 On the first image in the filmstrip view, click the label to ready it for text entry.



- 4 Type *Cathy* and press Return.
- 5 The next image in the Browser is selected and ready for naming; type *Ron* and press Return.

TIP If you are a fan of cork, you can leave the design alone. If you desire a less photorealistic design, you can turn off the corkboard look from the Appearance section of Aperture preferences.

Confirming and Rejecting Matches

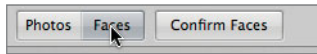
The corkboard is the place where any face that is detected and given a name is displayed. Each image on the corkboard represents one or more photos that depict that person.

- 1 Double-click the Cathy image located on the corkboard.

Double-clicking an image on the corkboard displays the confirmed images of that person. Images are displayed in the lower part of the window that Aperture believes may also contain that person.

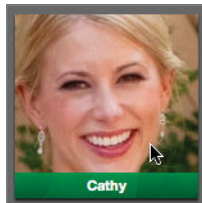
You'll need to confirm or reject the images on the lower part of the window. Let's zoom in to make it easier to identify which faces Aperture thinks are similar to Cathy.

- 2 At the bottom of the window, click Faces to zoom into the face in the photo that Aperture thinks could be Cathy.



Because these are all images of Cathy, you'll confirm them.

- 3 Click Confirm Faces.
- 4 Click the first image in the bottom half of the window to highlight it.

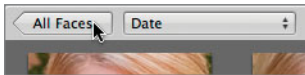


A green highlight indicates that this image will be confirmed as Cathy when you click Done. Let's find a faster way to confirm the remaining images.

- 5 Drag a selection rectangle around the four remaining images.



- 6 Click Done. Now you can confirm the photos with the groom in them.
- 7 Click the All Faces button.



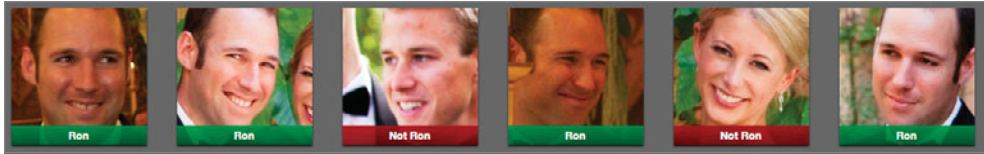
- 8 Double-click Ron.
- 9 Click the Faces button to zoom in. Because all these images show Ron, you'll confirm them all.
- 10 Click Confirm Faces.
- 11 Drag a selection rectangle around the four unconfirmed images.
- 12 Click Done.

By confirming more images, Aperture has more angles, lighting, and facial expressions to evaluate, giving a better idea of what Ron looks like in multiple situations. After reanalyzing the remaining photos, Aperture identifies with more photos that may contain Ron. The first two are Ron, but the third and fifth images are not.

- 13 Click Confirm Faces.
- 14 Click once on the first two images.
- 15 Click twice on the third image to mark it as Not Ron.



- 16 Click the next image to confirm it.
- 17 Click the fifth image twice to reject this image. It's actually Cathy.



- 18 Click the last image to confirm it, then click Done.
- 19 Click the All Faces button to return to the Faces view.

You could continue confirming and rejecting faces as Ron, but you get the idea. The recognition isn't infallible, so prepare to find some misidentifications. However, Aperture can be incredibly helpful overall at quickly finding images of important people in your library.

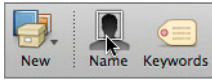
Adding a Name to a Face

You can also use the Name button to add names to faces. In some cases, faces may be detected but—because of lighting, aging, or the way a head is tilted—the face may not be recognized as one of the people you've already identified. You can click the Name button to link the face with the appropriate name.

- 1 In the toolbar, click the Browser button, or press V until the Browser is displayed.
- 2 Double-click the first image in the Browser, **2009-09-26 at 10-23-34**.



- 3 In the toolbar, click the Name button.



- 4 A face label is displayed as *unnamed*. Type *Cathy* in the face label. Before you complete the name, Cathy's ID will appear in the list.
- 5 From the list, choose Cathy to assign the name, then click Done.



TIP You can remove a face label by selecting the photo, clicking the Name button in the toolbar, and clicking the Remove button in the top-left corner of the positioning box.

Adding Missed Faces

On occasion, your subjects won't be looking into the camera, so Aperture may not find their faces. Yet, you still may want to identify them in the shot. Aperture has a way for you to manually identify a face and assign a name.

- 1 In the toolbar, click the Browser button, or press V until the Browser is displayed.
- 2 Scroll the Browser until you see the image **2009-09-26 at 12-44-41**.

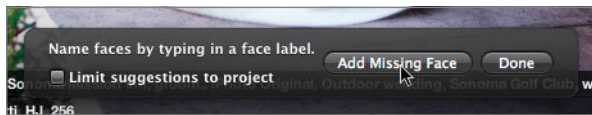


3 Double-click the image to display it in the Viewer.

4 In the toolbar, click the Name button.

As you can see, Aperture found Ron's face but not Cathy's because she is facing away from the camera. You can add Cathy so this photo shows up when you search for her.

5 In the dialog, click the Add Missing Face button.



6 Drag the rectangle to position it over Cathy's head.

7 In the face label, begin typing *Cathy*.

Cathy's name and picture are displayed.

8 From the list, choose Cathy to assign her name to the image. Click Done. This image is added to the collection of Cathy photos.



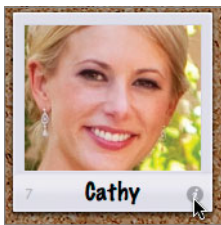
Adding Facebook IDs to Faces

If you use Facebook to share photos, Faces information can automatically be converted into Facebook tags and shared with the people identified in the photos. All you need are their Facebook IDs.

- 1 In the Library inspector, select the Faces view.



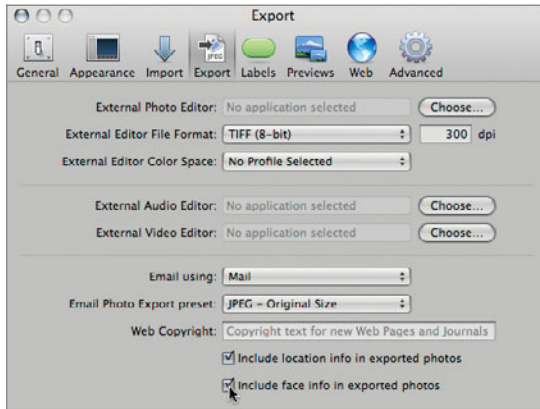
- 2 On Cathy's picture, click the Info button.



Here is where you would enter the email address associated with the recipient's Facebook ID. You will also need to confirm that the default preference is still in place to share the Faces info. Aperture does not publish the email address on the web. The address is only used on Facebook to announce that the person has been tagged in a photo.

- 3 Close the Info window.
- 4 Choose Aperture > Preferences, and click the Export button.

- 5 Make sure that “Include face info in exported photos” is selected. When this option is selected, the name of the subject is added to the exported image’s metadata as a keyword.

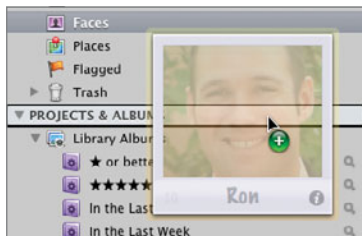


- 6 Close preferences.

Creating a Faces Smart Album

After you have applied names to Faces, you can create Smart Albums based on the people in your photos.

- 1 In the library, select the Faces view.
- 2 Shift-click Cathy and Ron’s images.
- 3 Drag the two images to the Library inspector, and then press the V key to view the Browser only.



A Smart Album is automatically created with the name Cathy or Ron. But what if we wanted this Smart Album to only include photos with Cathy *and* Ron?

- 4 Click the Smart Album Smart Settings HUD.

- 5 In the pop-up menu at the top left of the HUD, change Any to All.
- 6 Close the Smart Settings HUD.
- 7 Click the Smart Album's name to highlight it.
- 8 Double-click the word *or*, which is in the title of the Smart Album.
- 9 Change the word *or* to *and*, and then press Return.

Faces and Places information is based on emerging and constantly evolving technologies. It eventually will become essential search criteria just as keywords and EXIF metadata are today. Although Faces may make a wrong suggestion at times, and not everyone has a GPS for their camera, the flexibility of these features means any library can benefit from this technology today and reap even greater rewards as the technology matures.

Lesson Review

1. How do you import a single photo from your iPhoto library into Aperture?
2. What is GPX?
3. How do you view a map only for photos of a certain project?
4. Where do you find the menu to create a new Smart Album based on the Places view?
5. How do you add a name to a face that has not been located by Aperture?

Answers

1. Choose File > Import > iPhoto Browser. The iPhoto Browser appears and allows you to view and select individual photos in iPhoto. Choosing Import > iPhoto Library imports the entire iPhoto library.
2. GPX is one of the GPS track log file types that Aperture can import. The other supported format is NMEA.
3. Select the project, and then click the Places button in the toolbar. Selecting the Places view in the Library inspector will show you the locations for all projects.
4. The “New Smart Album from View” is found in the Places Action pop-up menu in the tool strip.
5. Select an image to display in the Viewer. In the toolbar, click the Name button, and in the dialog click the Add Missing Face button. Finally, type a name in the label.

Index

Symbols

- . (period), for switching to next preset group, 73
- / (forward slash) key, assigning flags with, 23, 138
- [] (bracket keys), rotating images with, 21
- ` (Grave Accent) key, for accessing Loupe tool, 112

A

- Action pop-up menu, 88, 194
- actions, import settings, 184
- Add Keyword button, 64
- Add Subordinate Keyword button, 64
- Add to Favorites, 194
- adjusting audio levels, 388–390
- adjusting images
 - Auto Exposure, 34–35
 - automatic, 249–251
 - black point, 219–220
 - brightness, 229
 - chromatic aberrations, 283–285
 - for color clipping, 226
 - color with Levels controls, 254–256
 - contrast, 239–240
 - cropping, 31–33
 - Devignette, 241–242
 - editing tools for, 207
 - exposure, 218–219
 - highlights, 245–247, 274–277
 - local adjustments with brushes. *see* brushes
 - luminance, 251–253
 - midtone, 274–277
 - nondestructive, 27–28
 - order of adjustments in tonal editing, 243–244
 - overview, 27
 - saturation, 264–265
 - Scale Size adjustment, 302
 - shadows, 247–249, 274–277
 - straightening, 30–31
 - versions and, 27–28
 - vibrancy, 268
 - Vignette, 242–243
 - white balance, 28–30, 228–229
- adjusting RAW files
 - Boost and Hue Boost, 339–340
 - noise reduction, 343–346
- adjustment presets, import settings, 184
- adjustments
 - adding, 209–210
 - copying with Lift & Stamp tool, 233–234
 - creating presets from, 213
 - disabling and deleting, 212
 - making brushes from, 322–325
 - resetting, 214–215
 - System Preferences, 462
- Adjustments HUD
 - Auto Levels Combined button, 250
 - Devignette, 241–242
 - Highlights & Shadows, 244–246
 - Noise Reduction, 347–349
 - Vignette, 242–243
- Adjustments inspector, 7, 208–209
- Adjustments pop-up menu, 209
- Adobe Photoshop, 285
- albums
 - creating slideshow album, 362–364
 - creating Smart Albums, 95–97
 - creating Smart Albums using Filter HUD, 98–101
 - getting updates from MobileMe gallery, 408–409
 - removing from Facebook, 411
 - removing from Flickr, 412
 - uploading to MobileMe gallery, 406–407
 - working with, 94–95
- Aperture basics
 - adjusting images, 27
 - arranging images in browser, 16–17
 - Auto Exposure, 34–35
 - changing metadata views in Metadata inspector, 24–27
 - configuring email preferences, 37–39
 - cropping images, 31–33
 - deleting images, 17–20
 - filtering images in the Browser, 27
 - flagging images in the Browser, 22–23
 - importing images, 8–9
 - importing images from memory card, 9–10
 - importing images into new project, 10–13
 - interface elements, 7
 - lesson review, 40–41
 - opening Aperture, 4–7
 - overview of, 3–4
 - posting to social network and photo gallery sites, 40
 - rating and rejecting images, 35–37
 - selecting and rotating images, 20–21
 - sending images via email, 39–40
 - sorting images in the Browser, 14–15
 - straightening images, 30–31
 - versions and nondestructive adjustments, 27–28
 - white balance adjustments, 28–30
 - working with images in the Browser, 13–14

Applescript, 468–469
 artifacts, 283–285, 309–311
 aspect ratio, 230–231, 373–375
 Aspect Ratio tool, 32
 audio
 adding tracks to slideshows, 382–383
 adjusting audio levels, 388–390
 fitting slideshow and music duration, 384–385
 inserting iLife sound effects, 385–388
 Audio Adjustments HUD, 388–390
 Audio Browser, 382
 Auto Exposure, 34–35
 Auto Levels controls, 250
 Auto Levels Separate button, 249
 Auto Noise Compensation
 checkbox, 350
 auto settings, for adjustments, 214
 Autoflow feature, for adding
 pictures to pages, 434
 Autofocus Points button, 25
 automatic image adjustments, 249–251
 Automator
 leaning to use, 470
 overview, 468–469
 using prebuilt workflows from Automator website, 469
 auto-stacking images, 124–125

B

background colors, setting for
 slideshow, 361
 backups
 backing up libraries to vault, 199–201
 creating during import, 183–184
 batch changes, 65–67
 black and white, color images
 converted to, 256–259
 Black Levels slider, 252–253
 Black Point parameter
 exposure adjustments, 219–220
 shadow clipping and, 223
 Shadows control compared with, 247
 Black tint eyedropper, 266–267
 Blur brush, 294

books
 adding pictures to pages, 432–433
 arranging new photo boxes, 443–445
 Autoflow feature for adding
 pictures to pages, 434
 changing images in photo
 boxes, 441–443
 changing page layout of, 430–432
 customizing maps in, 439–441
 deleting/rearranging pages, 434–436
 framing images in photo
 boxes, 437–439
 layout of, 428
 ordering from printing
 service, 446–447
 plug-ins for, 468
 themes, 428–430
 types of, 429
 Boost, fine tuning RAW image, 339–340
 bracket keys [], rotating images
 with, 21
 brightening images, with Dodge
 brush, 300–301
 Brightness slider, 229, 253
 brightness, adjusting, 229
 Brinkman, Ron, 458–459
 broken links, repairing, 186–189
 Browser
 arranging images, 16–17
 deleting images, 17–20
 displaying metadata, 53–58
 filtering data and images, 27, 91–92
 flagging images, 22–23
 Full Screen mode, 110, 238
 identifying interface
 elements, 7
 Loupe tool, 116–117
 selecting and rotating images, 20–21
 selecting and viewing images, 13–14
 sorting images, 14–15
 Browser & Viewer Metadata
 dialog, 56
 Brush HUD, 295–296
 Brush Size slider, 295
 brushes
 adding/erasing brush strokes, 294–296

 applying to entire image, 307–309
 Burn (Darken) brush, 303–307
 cloning images, 319–322
 correcting halo artifacts, 309–311
 creating multiple instances of, 325–328
 deleting retouch brush strokes, 314–316
 Dodge (Lighten) brush, 300–301
 edge detection while painting, 301–303
 lesson review, 328–329
 making brushes from
 adjustments, 322–325
 modifying brush strokes in
 Inspector, 298–299
 overview of, 293
 range limits, 301
 repairing images, 312–314
 repairing images using
 automatic and manual
 source selection, 316–319
 retouching images, 311–312
 Skin Smoothing brush, 296–297
 viewing painted areas as
 overlays, 298

Burn (Darken) brush, 303–307
 Burn Amount slider, 306

C

C key (Crop tool), 231
 Camera Info pane, 24
 Camera/color option, Adjustments
 inspector, 209
 cameras. *see* DSLR (digital single
 lens reflex) cameras
 card readers, 9
 Centered Loupe, 112–114
 chromatic aberrations, 283–285
 clipping
 color channel clipping, 224
 identifying color clipping, 222–227
 recovering clipped highlights, 220–222
 Clone brush, for cloning images, 319–322
 cold areas, of images, 218

- color. *see also* RGB (red, green, blue)
 - adjusting with Levels controls, 254–256
 - changing single color, 269–270
 - chromatic aberration adjustments, 283–285
 - color channel clipping, 224
 - converting color images to black and white, 256–259
 - corrective tint controls, 266–267
 - creative tint controls, 265–266
 - Curves Channels, 277–282
 - Curves control, 273
 - editing tools for, 207
 - expanding Color controls to work with up to six colors, 271–272
 - external editors for working with, 285–287
 - labeling, 25–26
 - lesson review, 290–291
 - luminance curves, 273–277
 - overview of, 263
 - presets, 211
 - saturation adjustments, 264–265
 - switching between Aperture and external editor, 287–290
 - vibrancy adjustments, 268
 - viewing painted areas as overlays, 298
 - color clipping. *see* clipping
 - Color controls, 269–272
 - Color Correction slider, 248
 - color eyedropper, 270
 - Color Label pop-up menu, 25–26
 - color values, in Loupe tool, 115
 - color wheels, tint controls, 265
 - Command key, for selection, 31
 - Command-A (Select All), 23
 - Command-Backslash (\), for selection, 132
 - Command-click, for selection, 39
 - Command-Delete, for deletion, 18
 - Command-J (View options), 55
 - Command-L (Album), 95
 - Command-Left Bracket ([), for promoting images, 135
 - Command-Option-A (Auto-Stack), 125
 - Command-Option-drag, 151
 - Command-Right Bracket (]), for demoting images, 136
 - Command-S (Save), 290
 - Command-Shift-A (deselect), 67
 - Command-Shift-B (Batch Change), 66
 - Command-Shift-Hyphen (-), for zooming out, 114
 - Command-Shift-K (Unstack), 127
 - Command-Shift-O (open in external editor), 290
 - Command-Shift-Plus (+), for zooming in, 114
 - Command-Shift-V (Stamp), 80
 - Common Sizes pop-up menu, 230
 - Compare mode, Viewer, 259–261
 - comparing/evaluating images
 - assigning ratings to groups of images, 120–122
 - assigning ratings to images, 117–120
 - auto-stacking images, 124–125
 - Centered Loupe, 112–114
 - creating a Light Table, 140–141
 - creating stacks manually, 128–129
 - Cursor-focused Loupe, 114–115
 - extracting from and adding to stacks, 125–128
 - Full Screen mode, 107–110
 - generating previews, 104–105
 - keystrokes for speed rating images, 137–139
 - lesson review, 146–147
 - Loupe tool for, 112
 - merging stacks, 130–131
 - navigating and arranging images on Light Table, 142–146
 - overview, 103
 - primary selection for rating images, 122–123
 - promoting/demoting picks, 133–137
 - Quick Preview mode, 106–107
 - reviewing collections on Light Table, 139
 - splitting stacks, 129–130
 - with Stack mode, 131–133
 - switching between projects in Full Screen mode, 110–112
 - using Loupe tool in Browser, 116–117
 - working with stacked images, 123–124
 - Contents pane, rearranging keywords in, 70
 - continuous shooting mode (burst mode), digital cameras, 123
 - contrast
 - adding definition by increasing, 240
 - adjusting, 239–240
 - Contrast brush, 322
 - Contrast slider, 240
 - control bars, displaying under Browser, 118
 - Control-Backslash (\), for speed rating image, 137
 - control-click (or right click), for accessing tool options, 117
 - corkboard, in Faces feature, 170
 - corrective tint controls, 266–267
 - creative tint controls, 265–266
 - Crop HUD, 230–231
 - Crop tool (C), 31–33
 - cropping images and photos
 - aspect ratio setting, 230–231
 - overview, 230
 - setting crop size for printing, 231–233
 - for slideshow, 373–375
 - CRT displays, 462
 - Curves control
 - adjusting color clipping, 226
 - correcting color channels, 277–282
 - luminance curves, 273–277
 - overview, 273
 - Customize Toolbar, 133–134
- D**
- D key, for displaying control bars, 118
 - Definition brush, 322
 - definition, adding by increasing contrast, 259–261
 - deleting images, 17–20
 - delivering final images
 - digital images, 454–457
 - lesson review, 457
 - overview, 427
 - via books. *see* books
 - via printing. *see* printing images

De-noise slider, 343–346
 depth of field, simulating, 294
 digital cameras. *see* DSLR (digital single lens reflex) cameras
 digital images
 exporting master files, 454–457
 overview, 454
 displays
 adjusting System Preferences, 462
 calibration of, 462
 multiple display configuration, 463–464
 DNG (Digital Negative) format, 351–352
 Dodge (Lighten) brush, 300–301
 Down Arrow, navigating stacked images, 133
 dragging
 Command-Option-drag, 151
 images into new project, 193
 keywords to images, 60–63
 library to Mac, 198
 photos to maps, 156–158
 DSLR (digital single lens reflex) cameras
 Camera Info pane, 24
 Camera/color option, in Adjustments inspector, 209
 continuous shooting mode (burst mode), 123
 removing camera vignetting, 240–241
 video capture and, 390
 Duplicate Project Structure, 191
 dynamic alignment guides, on Light Table, 144
 dynamic slideshows. *see* slideshows

E

E key (Full Screen mode), 108
 edge detection, while painting with brushes, 301–303
 edge sharpening, 341–343
 editing. *see also* adjustments
 color corrections. *see* color images. *see* adjusting images
 nondestructive. *see* nondestructive editing
 plug-ins for, 468
 slideshow on the fly, 394–395
 tonal corrections. *see* tonal corrections

editors, external
 choosing, 286–287
 overview, 285–286
 switching between Aperture and, 287–290
 effects
 inserting iLife sound effects, 385–388
 using photo effects in slideshows, 381
 email
 configuring preferences for, 37–39
 sending images via, 39–40
 Enhancement brick
 tint controls, 265
 Vibrancy slider, 268
 Eraser tool, for cleaning up brush strokes, 296
 evaluating images. *see* comparing/evaluating images
 Exchangeable Image File. *see* EXIF (Exchangeable Image File)
 EXIF (Exchangeable Image File). *see also* metadata
 displaying metadata in web journals, 420
 maintained while migrating iPhoto library, 152
 as metadata, 43
 expanding Aperture functionality
 Automator and Applescript, 468–469
 leaning to use Automator, 470
 overview, 467
 plug-ins for, 468
 using prebuilt workflows, 469
 export plug-ins, 468
 exposure
 adjusting, 218–219
 auto settings, 214
 Exposure slider, 218
 external editors. *see* editors, external

F

F key (Full screen mode), 132, 238
 Facebook
 adding Facebook IDs to Faces feature, 175–176
 posting to, 40, 410–411
 removing account from Aperture, 412
 Faces feature
 adding Facebook IDs to, 175–176
 adding missed faces, 173–174
 adding names to faces, 172–173
 confirming/rejecting matches, 170–172
 creating Faces Smart Album, 176–177
 opening/using Faces view, 169
 Feather tool, for smooth transitions, 296
 fields, metadata, 90–91
 File Info, showing on import, 45–46
 files and folders
 excluding file types on import, 182–183
 finding referenced files, 185
 importing folders from hard disk, 44–45
 organizing libraries using folders, 191–192
 selecting RAW, 337
 Filter HUD
 creating Smart Albums and, 97–101
 detailed image-filtering with, 92–94
 rating and rejecting images, 35
 filters/filtering
 in Browser, 27, 91–92
 converting color images to black and white, 257–258
 Finder
 accessing APTS Aperture3 library, 5
 finding referenced files, 185
 Fine Tuning controls, for RAW images
 Auto Noise Compensation checkbox, 350
 Boost and Hue Boost, 339–340
 De-noise adjustments, 343–346
 saving fine-tuning presets, 351
 sharpening parameters, 341–343
 FireWire cable, tethered shooting and, 465
 “Fit images within” pop-up menu, 420
 five star ratings. *see* rating images
 flagging images
 in the Browser, 22–23
 Forward Slash (/) key for, 138

- Flickr
 - posting to, 40, 411–413
 - removing account from
 - Aperture, 412
- folders. *see* files and folders
- forward slash (/) key, for flagging images, 23, 138
- Full Screen mode
 - evaluating images in, 107–110
 - switching between projects in, 110–112
 - tonal corrections in, 238–239
- G**
- GMT (Greenwich Mean Time), 167
- GPS
 - importing GPS track logs, 165–167
 - mapping photos to shot locations, 6–7
 - moving locator pins on maps, 164–165
 - viewing GPS-tagged images, 153–156
- GPX format, for GPS logs, 165–166
- Grave Accent (`) key, for accessing Loupe tool, 112
- Gray Levels slider, 252–253
- Gray tint eyedropper, 267
- green insertion line, indicating image placement, 16
- groups
 - assigning ratings to group of images, 120–122
 - grouping keywords into customized hierarchy, 63–65
- H**
- Hall, Catherine, 202–204
- halo artifacts, 309–311
- hard disk, importing folders from, 44–45
- HDTV, formatting slideshow for, 373
- heads-up display. *see* HUD (heads-up display)
- highlights
 - adjusting, 245–247
 - clipping, 224
 - controlling brightness of, 253
 - Curves for adjusting, 274–277
 - displaying hot and cold areas, 218
 - limiting brush range to, 300–301
 - recovering clipped highlights, 220–222
- Highlights & Shadows control, 244–249
 - controlling highlights, 245–247
 - controlling shadows, 247–249
 - overview, 244–245
- Highlights slider, 245
- histograms
 - in Adjustments inspector, 209
 - color channel curves, 279–281
 - Levels RGB histogram, 252
 - luminance curves, 274–277
 - overview, 215–217
 - white balance adjustments with, 228–229
- Holtz, Don, 353–354
- hot area, displaying, 218
- HUD (heads-up display)
 - Adjustments HUD. *see* Adjustments HUD
 - Audio Adjustments HUD, 388–390
 - Auto-Stack Images HUD, 125
 - Brush HUD, 295–296
 - Crop HUD, 32–33, 230–231
 - Filter HUD, 35, 92–94, 98–101
 - Image Scale HUD, 374
 - Inspector HUD, 238–239
 - Keywords HUD, 60–63
 - Lift & Stamp HUD, 77–80
 - Query HUD, 415
- Hue Boost, fine tuning RAW image, 339–340
- Hue slider, 270–272
- I**
- I key (Adjustments and Metadata Inspectors), 94
- iLife, inserting iLife sound effects into slideshows, 385–388
- image capture, setting Aperture as default for, 5
- Image Scale HUD, 374
- images
 - adding to web journal, 415–417
 - adjusting. *see* adjusting images
 - applying brushes to entire, 307–309
 - arranging manually, 16–17
 - aspect ratio, 230–231, 373–375
 - cloning, 319–322
 - comparing/evaluating. *see* comparing/evaluating images
 - converting referenced images to managed images, 190–191
 - cropping. *see* cropping images and photos
 - deleting, 17–20
 - delivering final. *see* delivering final images
 - dragging keywords to, 60–63
 - editing. *see* nondestructive editing
 - filtering, 91–94
 - flagging, 22–23
 - importing. *see* importing images
 - master images, 214
 - moving between projects, 192–193
 - moving referenced images, 189–190
 - printing. *see* printing images
 - rating. *see* rating images
 - RAW. *see* RAW files
 - repairing using automatic and manual source selection, 316–319
 - repairing with Repair brush, 312–314
 - retouching, 311–312
 - selecting. *see* selecting images
 - sending via email, 39–40
 - sorting, 14–15
 - stacked. *see* stacked images
 - uploading. *see* uploading images
 - viewing GPS-tagged images, 153–156
 - working with referenced images, 185
- Import button, on toolbar, 44
- Import Settings pop-up menu
 - File Info, 45–46
 - renaming images, 46–48
 - Time Zone, 48–49
- import settings, libraries and, 184–185
- importing folders, from hard disk, 44–45
- importing GPS track logs, 165–167

- importing images
 - adding descriptive metadata, 49–51
 - adjusting time zones, 48–49
 - backup during import, 183–184
 - customizing import settings, 45
 - excluding file types on import, 182–183
 - from memory card, 9–10
 - other methods for, 10
 - overview of, 8–9
 - into projects, 10–13, 51–53
 - referenced images, 180
 - renaming images, 46–48
 - showing File Info on import, 45–46
 - indexing photos
 - browsing iPhoto library, 150–151
 - creating Smart Albums from maps, 167–169
 - lesson review, 177
 - migrating entire iPhoto library, 151–153
 - organizing library using Faces feature. *see* Faces feature
 - overview, 149
 - place locations for adding pictures to maps. *see* Places feature
 - Inspector HUD, 238–239
 - Inspector pane
 - identifying interface elements, 7
 - modifying brush strokes in, 298–299
 - selecting Metadata inspector, 24
 - interface elements, identifying, 7
 - iPad, transferring slideshow to, 395–397
 - iPhone
 - GPS built-in to, 153
 - importing GPS information from, 166
 - Path Tracker app, 165
 - transferring slideshow to, 395–397
 - viewing MobileMe galleries on, 409
 - iPhoto Browser, 150–151
 - iPhoto library
 - browsing, 150–151
 - migrating entire, 151–153
 - iPod Touch
 - transferring slideshow to, 395–397
 - viewing MobileMe galleries on, 409
 - IPTC (International Press Telecommunications Council). *see also* metadata
 - adding descriptive metadata, 49–51
 - displaying metadata in web journals, 420
 - as metadata, 43
 - iTunes, accessing, 382
- J**
- JPEG (Joint Photographic Experts Group). *see also* RAW + JPEG pairs
 - comparing RAW and JPEG files, 334–336
 - converting to black and white, 256
 - email preferences, 37–38
 - overview, 331
 - preview files, 104
 - white balance and, 30
- K**
- Ken Burns effect, in slideshows, 371–373
 - Ken Burns theme, applying transitions, 378–379
 - keyboard shortcuts
 - assigning, 74
 - displaying available, 139
 - keyword controls, 67–70, 71–73
 - keywords
 - applying using keyboard shortcuts, 73–77
 - applying using keyword buttons, 71–73
 - applying using Lift & Stamp tools, 77–80
 - assigning by dragging, 60–63
 - assigning using Metadata inspector, 58–60
 - batch changing, 65–67
 - defining in Keywords HUD, 60
 - grouping into customized hierarchy, 63–65
 - working with, 67–70
 - Keywords HUD
 - defining keywords, 60
 - dragging keywords to images, 60–63
 - grouping keywords into customized hierarchy, 63–65
- L**
- layout
 - book, 428
 - web journal, 419–420
 - LCD displays, adjusting System Preferences, 462
 - Left Arrow key, for navigating slides, 360
 - left bracket [, rotating images with, 21
 - Levels controls
 - color adjustments with, 254–256
 - luminance adjustments with, 251–253
 - Quarter-Tone Levels controls, 253–254
 - libraries
 - backing up to vault, 199–201
 - choosing location for referenced files, 181–182
 - converting referenced images to managed images, 190–191
 - creating and storing images in, 11
 - creating backup during import, 183–184
 - creating favorite projects, 193–195
 - editing keyword library, 70
 - excluding file types on import, 182–183
 - Faces feature for organizing. *see* Faces feature
 - finding original files, 185
 - folders for organizing, 191–192
 - import settings, 184–185
 - importing referenced images, 180
 - lesson review, 201
 - moving images between projects, 192–193
 - moving referenced images, 189–190

- multiple, 195–196
- organizing, 191
- overview, 179
- repairing broken links, 186–189
- specifying location for, 12
- syncing two, 197–198
- working with referenced images, 185
- Library inspector
 - identifying interface elements, 7
 - importing images into Aperture, 8
 - Projects & Albums section, 96
 - Trash option, 18
- Lift & Stamp
 - HUD, 77–80
 - tools, 233–234
- Light Table
 - creating, 140–141
 - navigating and arranging images on, 142–146
 - overview of, 139
- List view, customizing, 15
- local adjustments
 - with brushes. *see* brushes
 - types of image editing tools, 207
- locations. *see also* Places feature
 - adding unknown location to Places database, 159–162
 - assigning in Metadata inspector, 164
 - assigning to photos by dragging photos to map, 156–158
 - assigning to projects, 158–159
 - removing photos from, 162–163
- Loupe tool
 - Centered Loupe, 112–114
 - color values, 115
 - for comparing/evaluating images, 112
 - Cursor-focused Loupe, 114–115
 - for magnification, 29
 - using in Browser, 116–117
- Low Tonal Width slider, 248
- luminance adjustments, 251–253
- Luminance slider, 270–272
- M**
- M key (master image), 214
- Mac OS X
 - Automator application, 468
 - dragging library to Mac desktop, 198
 - System Preferences, 404, 462
- Manage My Places, 162
- Manage Presets, Action pop-up menu, 88
- managed libraries
 - compared with referenced libraries, 180
 - converting referenced images to, 190–191
- maps
 - customizing in books, 439–441
 - dragging photos to, 156–158
 - mapping photos to shot locations, 6–7
 - moving locator pins on, 164–165
 - place locations for adding pictures to. *see* Places feature
- master files
 - comparing with versions, 214
 - exporting, 454–457
 - relocating, 189–190
 - reprocessing, 338
- McCurry, Steve, 202
- media cards, erasing, 13
- memory card, importing images from, 9–10
- metadata
 - adding while importing images, 49–51
 - batch changing, 65–67
 - changing views, 24–27
 - creating and applying presets, 86–90
 - creating Smart Albums, 95–97
 - creating Smart Albums using Filter HUD, 98–101
 - creating views, 83–86
 - customizing import settings, 45
 - detailed image-filtering with Browser Filter HUD, 92–94
 - displaying in the Browser and Viewer, 53–58
 - editing views and presets, 80–83
 - EXIF and IPTC Core as, 43
 - filtering data in Browser, 91–92
 - lesson review, 101
 - maintaining while migrating iPhoto library, 152
 - modifying one field of, 90–91
 - showing File Info on import, 45–46
 - using keywords. *see* keywords
 - in web journals, 420–421
 - working with albums, 94–95
- Metadata inspector
 - assigning keywords using, 58–60
 - assigning locations in, 164
 - changing metadata views in, 24–27
 - identifying interface elements, 7
- Metadata pop-up menu, 420
- midtones
 - adjusting, 229
 - controlling brightness of, 253
 - Curves for adjusting, 274–277
 - limiting brush range to, 301
- Midtones slider, 248
- MobileMe
 - getting updates from, 408–409
 - posting to, 40
 - publishing web journals to, 424
 - sending slideshow to, 397–400
 - signing in, 404–405
 - uploading to, 405–407
 - viewing galleries on iPhone or iPod Touch, 409
- MobileMe button, on toolbar, 404
- moire patterns, removing, 349–350
- multiple displays
 - configuring Aperture for, 464
 - configuring Macs for, 463–464
- multiple instances, of brushes, 325–328
- multiple libraries, 195–196
- Multi-Touch track pad, 14
- music. *see also* audio
 - fitting slideshow and music duration, 384–385
 - mixing music and sound effects, 382
 - synchronizing slide to musical beats, 392

N

Name & Caption, Metadata View
 pop-up menu, 420
 names, adding to faces, 172–173
 Naming Presets dialog, 46
 NMEA, GPS log format, 166
 noise reduction
 brush for, 322
 De-noise slider, 343–346
 Noise Reduction controls,
 347–349
 overview, 340
 nondestructive editing
 adding adjustments, 209–210
 adding presets, 210–211
 Adjustments inspector for,
 208–209
 aspect ratio settings, 230–231
 black point adjustments,
 219–220
 brightness adjustments, 229
 creating presets from
 adjustments, 213
 cropping photos, 230
 disabling and deleting
 adjustments, 212
 displaying hot and cold
 areas, 218
 duplicating a version, 211–212
 exposure adjustments,
 218–219
 histograms and, 215–217
 identifying color clipping,
 222–227
 lesson review, 235
 Lift & Stamp tools, 233–234
 overview, 27–28
 overview of, 207–208
 recovering clipped highlights,
 220–222
 resetting adjustments,
 214–215
 setting crop size for printing,
 231–233
 white balance adjustments
 with histogram, 228–229

O

online sharing
 adding images to web journal,
 415–417
 adding text to web journals,
 422–423
 changing web journal theme,
 417–419

creating web journals,
 413–415
 displaying metadata in web
 journals, 420–421
 getting updates from
 MobileMe gallery,
 408–409
 lesson review, 425
 modifying web journal layout,
 419–420
 overview, 403
 posting to Facebook, 410–411
 posting to Flickr, 411–413
 publishing web journals,
 424–425
 signing in to MobileMe,
 404–405
 uploading to MobileMe
 gallery, 405–407
 viewing MobileMe galleries on
 iPhone or iPod Touch, 409
 opening Aperture, 4–7
 Option-I (iPhoto Browser), 150
 Option-O (Compare), 259
 Option-V (Duplicate Version), 256
 overexposure, correcting, 216–217
 overlays
 enabling, 240
 viewing painted areas as, 298

P

packages, Mac OS X, 180
 page layout, of books, 430–432
 panning
 images, 108–109
 Ken Burns pan-and-zoom
 technique, 371
 options for, 154–155
 Path Tracker app, iPhone, 165
 photo boxes
 arranging new, 443–445
 changing images in, 441–443
 framing images in, 437–439
 photo gallery sites, posting to, 40
 photos
 adding, deleting, and
 rearranging in
 slideshows, 364–367
 connecting to map locations.
see Places feature
 cropping. *see* cropping images
 and photos
 indexing. *see* indexing photos
 mapping to shot locations,
 6–7

organizing. *see* Faces feature
 sharing. *see* online sharing
 using photo effects in
 slideshows, 381
 photo-sharing sites
 Facebook, 410
 Flickr, 411
 picks
 promoting/demoting, 133–137
 in stacks, 131
 pins, moving locator pins on maps,
 164–165
 Pixel Grid, Loupe tool, 115
 pixels
 blurring and, 298
 resolution settings and, 231
 Places feature
 adding unknown location to
 Places database, 159–162
 assigning locations in
 Metadata inspector, 164
 assigning locations to a
 project, 158–159
 assigning locations to photos
 by dragging photos to
 map, 156–158
 importing GPS track logs,
 165–167
 moving locator pins on maps,
 164–165
 overview of, 153–167
 removing photos from a
 location, 162–163
 viewing GPS-tagged images,
 153–156
 playhead, locating in Browser, 364
 plug-ins, adding, 468
 Polarize filter, Quick Brushes,
 308–309
 presets
 adding, 210–211
 Adjustments inspector
 options, 209
 creating, 86–90
 creating from adjustments, 213
 editing, 80–83
 for printing, 450–452
 slideshow preset, 358–362
 Presets pop-up menu, 257
 Preview Quality slider, 104–105
 previews
 generating, 104–105
 Quick Preview mode, 106–107
 primary selection, for rating images,
 122–123

- printing images
 - expanded printing options, 452–454
 - overview, 447–448
 - presets for printing, 450–452
 - proofing onscreen, 448–450
 - setting crop size for, 231–233
 - printing service, ordering books from, 446–447
 - projects
 - assigning locations to, 158–159
 - creating favorite, 193–195
 - importing images into, 10–13, 51–53
 - managing in Library. *see* libraries
 - moving images between, 192–193
 - switching between in Full Screen mode, 110–112
 - Projects & Albums section, Library Inspector, 96
 - promoting/demoting picks, 133–137
 - proofing printed images onscreen, 448–450
 - PSD (Photoshop) format
 - saving watermarks as, 39
 - using Adobe Photoshop as external editor, 287
- Q**
- Quarter-Tone Levels controls, 253–254
 - Query HUD, 415
 - Quick Brushes
 - Burn (Darken) brush, 303–307
 - Clone brush, 319–322
 - Dodge (Lighten) brush, 300–301
 - Halo Reduction brush, 309–311
 - list of additional brushes, 322
 - overview, 294
 - Polarize filter, 308–309
 - Repair brush, 312–314
 - Skin Smoothing brush, 297
 - Quick Preview mode, 106–107
- R**
- Radius parameter
 - removing moire patterns, 349
 - Skin Smoothing brush, 298–299
 - Radius slider, 248
 - range limits, 301
 - Range slider, 270–272
 - rating images
 - assigning ratings, 117–120
 - assigning ratings to group of images, 120–122
 - keystrokes for speed rating images, 137–139
 - overview, 35–37
 - primary selection for, 122–123
 - reject rating, 37
 - star system for, 35–36, 109
 - RAW + JPEG pairs
 - import settings, 184
 - preview files, 104
 - working with, 332–334
 - RAW files
 - adjusting Boost and Hue Boost, 339–340
 - allowing downloads, 407
 - comparing with JPEG files, 334–336
 - converting to black and white, 256
 - decoding, 336
 - dynamic range of, 219
 - edge sharpening, 341–343
 - lesson review, 352
 - noise reduction with De-noise adjustments, 343–346
 - noise reduction with Noise Reduction controls, 347–349
 - overview, 331
 - removing moire patterns, 349–350
 - saving fine-tuning presets, 351
 - updating RAW decoder, 336–338
 - white balance and, 30
 - working with DNG files, 351–352
 - working with RAW+JPEG pairs, 332–334
 - Recovery slider, for exposure adjustments, 220
 - red, green, blue. *see* RGB (red, green, blue)
 - referenced library
 - choosing location for referenced files, 181–182
 - compared with managed libraries, 180
 - converting referenced images to managed images, 190–191
 - finding original files, 185
 - importing referenced images, 180
 - importing referenced images from iPhoto, 151
 - moving referenced images, 189–190
 - repairing broken links, 186–189
 - working with referenced images, 185
 - Reject rating, 37
 - Remove from Favorites, Action pop-up menu, 194
 - renaming images, 46–48
 - Repair brush, 312–314
 - repairing images
 - Repair brush for, 312–314
 - using automatic and manual source selection, 316–319
 - reprocessing master files, 338
 - resize handles
 - changing size and shape of images, 231
 - on Light Table, 142
 - resolution
 - calculating, 231
 - changing slide resolution, 366
 - setting preview resolution, 104–105
 - Retouch tool
 - automatic and manual source selection, 316–319
 - Clone brush, 319–322
 - deleting retouch brush strokes, 314–316
 - overview, 311–312
 - Repair brush, 312–314
 - RGB (red, green, blue). *see also* color
 - adjusting color with Levels controls, 254–256
 - converting color images to black and white, 256–259
 - luminance levels with RGB histogram, 252
 - RGB curves, 273
 - viewing in Loupe tool, 29–30
 - white balance adjustments with RGB histogram, 228

Right Arrow key
 navigating images, 36
 navigating slides, 360
 right bracket], rotating images
 with, 21
 Rotate tool, 20–21

S

Saturate brush, 322
 saturation adjustments, 264–265
 Saturation slider, 264–265, 270–272
 Scale Size adjustment, 302
 Scale to Fit option, 144
 SDK (software development
 kit), available from Apple
 Developer Connection, 468
 searches, options for, 101
 selecting images
 Command key, 21
 Command-A (Select All), 23
 Command-Backslash (\), for
 selection, 132
 Command-click, 39
 Command-Shift-A
 (deselect), 67
 selecting and rotating, 20–21
 selecting and viewing, 13–14
 shadows
 adjusting, 247–249
 controlling brightness of, 253
 Curves for adjusting, 274–277
 limiting brush range to, 301
 shadow clipping, 223–224
 Shadows slider, 245
 sharing photos on Web. *see* online
 sharing
 sharing slideshows
 overview, 395
 sending to YouTube or
 MobileMe, 397–400
 transferring to iPhone, iPad,
 or iPod Touch, 395–397
 Sharpen brush, 322
 sharpening
 edge sharpening, 341–343
 overview, 340
 Shift-A (Scale to Fit), 144
 Shift-D (Show Keywords Controls),
 67, 118
 Shift-H (Show Keywords HUD), 60
 Shift-Option-H (overlays), 240
 Shift-Option-Hyphen (-), changing
 Loupe size, 114

Shift-Option-Plus (+), changing
 Loupe size, 114
 Shift-U, displaying expanded
 metadata set in Viewer, 55
 Shift-Y, displaying expanded
 metadata set in Browser, 55
 Show Multiple view, Viewer, 137
 Skin Smoothing brush, 296–297
 skin tones, 268
 slideshows
 adding audio tracks, 382–383
 adding, deleting, and
 rearranging photos in,
 364–367
 adjusting audio levels,
 388–390
 applying transitions, 378–381
 creating and formatting titles,
 376–378
 creating slideshow album,
 362–364
 editing on the fly, 394–395
 editing to create visual
 rhythm, 392–394
 fitting slideshow and music
 duration, 384–385
 inserting iLife sound effects,
 385–388
 Ken Burns effect, 371–373
 lesson review, 400–401
 manually navigating preset,
 359–362
 mixing video into, 390–392
 overview, 357
 sending to YouTube or
 MobileMe, 397–400
 setting aspect ratio and
 cropping images,
 373–375
 sharing, 395
 slide durations, 368–370
 themes, 367–368
 transferring to iPhone, iPad,
 or iPod Touch, 395–397
 using photo effects, 381
 using preset, 358–359
 Smart Albums
 creating, 95–97
 creating from maps, 167–169
 creating using Filter HUD,
 98–101
 dragging images and, 193
 Smart Web Page Album,
 413–414

Snapshots preset, slideshows, 359
 social networks
 Facebook, 410–411
 Flickr, 411–413
 posting to, 40
 sorting images, in the Browser,
 14–15
 sound effects. *see also* audio
 inserting iLife sound effects,
 385–388
 mixing music and sound
 effects, 382
 Spacebar, for navigating slides in
 slideshow, 360
 Split View, Browser, 13
 splitting stacks, 129–130
 Stack mode, 131–133
 stacked images
 auto-stacking images, 124–125
 creating stacks manually,
 128–129
 extracting from and adding to
 stacks, 125–128
 merging stacks, 130–131
 overview, 123–124
 splitting stacks, 129–130
 Stack mode, 131–133
 Stamp tool, 77–80. *see also* Lift &
 Stamp
 Store Files pop-up menu, 182
 Straighten tool, 30–31
 syncing two libraries, 197–198
 System Preferences, Mac OS X,
 404, 462

T

T key (tooltips), 57–58
 tethered shooting, 465
 text, adding to web journals,
 422–423
 themes
 book, 428–430
 slideshows, 367–368
 web journals, 417–419
 Thumbnail Resize slider, 13
 thumbnails
 Loupe tool for viewing,
 116–117
 Thumbnail Resize slider, 45
 TIFF (Tagged Image File Format)
 saving watermarks as, 39
 using Adobe Photoshop as
 external editor, 287
 white balance and, 30

- time zones, adjusting, 48–49
 - Tint brush, 322
 - tint controls
 - corrective tint controls, 266–267
 - creative tint controls, 265–266
 - tint eyedroppers, 266
 - Tint sliders, 228
 - titles, creating and formatting
 - slideshow titles, 376–378
 - tonal corrections
 - adding definition by
 - increasing contrast, 240
 - adding vignette effect, 242–243
 - automatic image adjustments, 249–251
 - color adjustments with Levels controls, 254–256
 - comparing image versions, 259–261
 - contrast adjustment, 239–240
 - converting color images
 - to black and white, 256–259
 - highlight adjustments, 245–247
 - lesson review, 261
 - luminance adjustments, 251–253
 - making in Full Screen view, 238–239
 - order of adjustments, 243–244
 - overview of, 237
 - Quarter-Tone Levels controls, 253–254
 - removing camera vignetting, 240–241
 - shadow adjustments, 247–249
 - types of image editing tools, 207
 - Tool strip, 7, 122–123
 - Toolbar
 - identifying interface elements, 7
 - MobileMe button on, 404
 - tooltips, showing/hiding, 57–58
 - transitions, applying in slideshows, 378–381
 - Trash option, Library inspector, 18
- U**
- U key, for turning metadata on/off in Browser, 54–55
 - underexposure, correcting, 216–217
 - Unstack button, 127
 - Up Arrow, for navigating stacked images, 133
 - Update Previews option, 105
 - uploading images
 - to Facebook, 411
 - to Flickr, 413
 - to MobileMe gallery, 405–407
 - USB cable, tethered shooting and, 465
 - UTC (Coordinated Universal Time), 167
- V**
- V key, for selecting views, 13
 - vaults, backing up to, 199–201
 - versions
 - adjusting images and, 27–28
 - comparing, 259–261
 - duplicating, 211–212
 - vibrancy adjustments, 268
 - Vibrancy brush, 322
 - video clips, 390–392
 - Viewer
 - displaying metadata in, 53–58
 - Full Screen mode in, 110, 238
 - identifying interface elements, 7
 - Show Multiple view, 137
 - Viewer button, on Browser, 13
 - Viewer Mode pop-up menu, 259–261
 - vignetting
 - adding vignette effect, 242–243
 - removing camera vignetting, 240–241
- W**
- watermarks, 39–40
 - web journals
 - adding images to, 415–417
 - adding text to, 422–423
 - changing theme of, 417–419
 - creating, 413–415
 - displaying metadata in, 420–421
 - modifying layout of, 419–420
 - publishing, 424–425
 - web page album, 413–414
 - Welcome screen, 6
 - white balance
 - adjusting with histogram, 228–229
 - auto-correcting, 28–30
 - preset, 210
 - White Balance control, 29
 - White Balance Temperature (Temp) slider, 228
 - White Levels slider, 253
 - work environment
 - display calibration and, 462
 - multiple display configuration, 463–464
 - overview, 461
 - System Preferences, 462
 - tethered shooting, 465
- X**
- X and Y coordinates, for cropping, 233
- Y**
- Y key, for turning metadata on/off in Viewer, 54–55
 - YouTube, sending slideshow to, 397–400
- Z**
- zooming
 - Ken Burns pan-and-zoom technique, 371
 - options for, 154–155
 - Z key (Zoom), 106